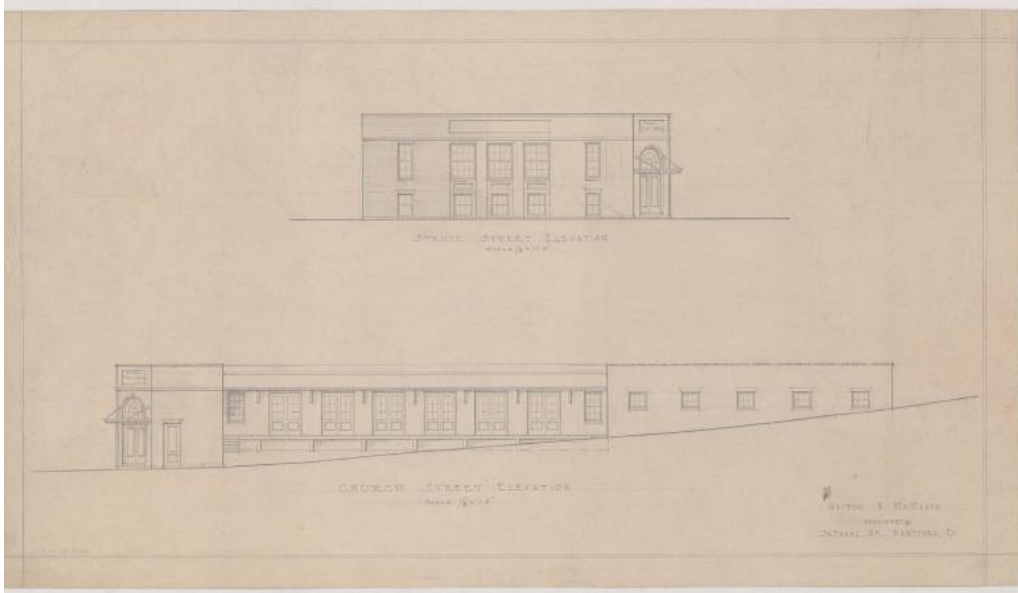


Basic Detail Report



Title Post Office, Hartford

Date about 1920

Primary Maker Whiton & McMahon

Medium Drawings; black and red pencil on paper

Description Drawings include plans for basement, ground floor and elevations of Spruce Street side, Church Street side. Plans include unexcavated, boiler room, coal bunker, ash hoist, storage, court, platform, above skylight, public space and vestibule. Elevations show a one story building with flat roof. On the Spruce Street side, there are five bays with eight over eight double hung sash windows with flat lintels and three over three double hung sash foundation windows. On the Church Street side, there are thirteen bays with six, two-paneled glass doors which lead onto a platform. The ground levels upwards, ending with six paneled windows. There is a two door entrance with a suspended chained portico with fanlight. Scale for drawings is $1/8" = 1'0"$.

Dimensions Sheet (height x width): $13 \frac{7}{8} \times 25 \frac{3}{4}$ in. (35.2 x 65.4cm)