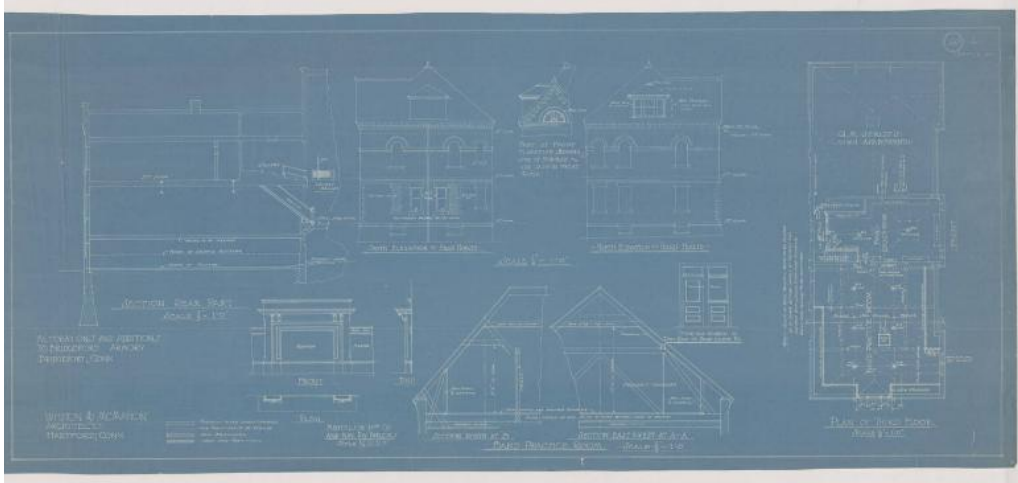


Basic Detail Report



Title Alterations to Bridgeport Armory

Date September 1913

Primary Maker Whiton & McMahon

Medium Blueprints; cyanotype and pencil on paper

Description Drawings include plans for general floor, third floor and elevations for south of head house, north elevation of head house. Also details of door and window in east end of band locker room, mantels in 14 Co. and nav. div. parlors and sections of north A and B, east and west at A-A and rear port. Plans include band practice room, band locker room, Q.M. Sergeant's living apartments, lockers, new dormer, chimney, 10" gun, 12" mortar, loading platform, plotting room, trolley beam, delivery table, observing room, gun station and magazine room. Sections of trusses, sheathing and gallery and details show changes glass plaster and wall rail. Scale for drawings is 1/4" = 1'0" and 1/8" = 1'0".

Dimensions Sheet (height x width): 25 3/4 x 35 3/4in. (65.4 x 90.8cm)