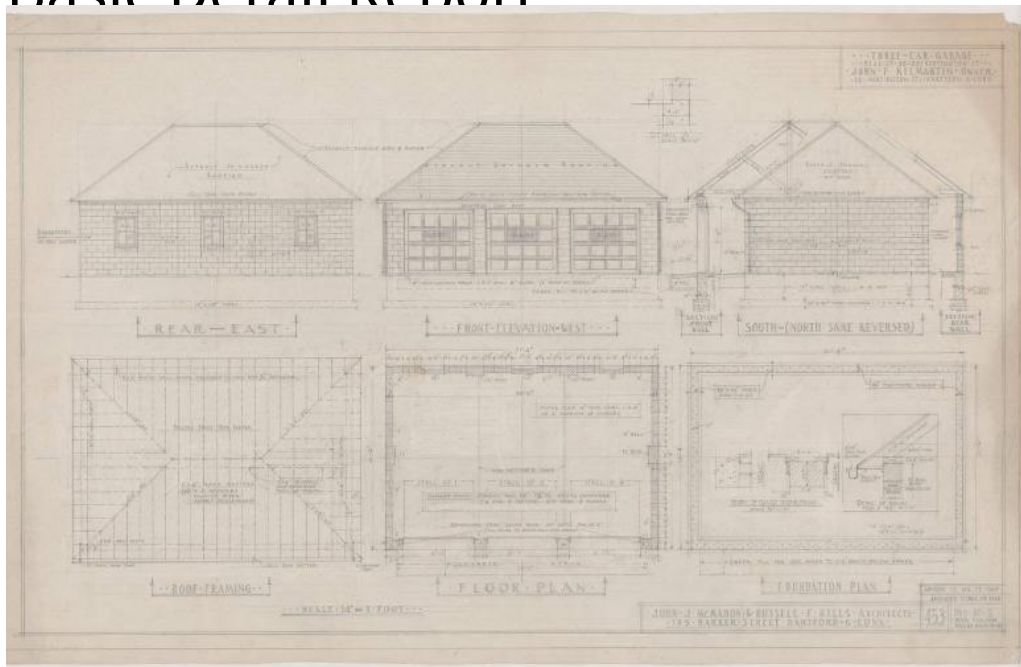


Basic Detail Report



Title John Kilmartin Garage

Date 1944-1947

Primary Maker John J. McMahon

Medium Drawings; pencil on paper

Description Drawings include plans for property, foundation, floor, roof and details of rear wall, unknown, continuous reinforced beam and garage door.

Also elevations for rear east, front west, side south and side north. Plans include existing house, new garage, driveway, property line, compass, Huntington Street, concrete walls, concrete floor, iron gutter, asphalt shingle and roof rafters. Elevations show one story building with asphalt shingle hipped roof and three door garage. Facade includes two over two double hung sash windows with galvanized iron eaves, gutter and glazed windows on garage doors. Details show galvanized iron gutter and sand block. Scales for drawings are $1/8" = 1'0"$ and $1/4" = 1'0"$.

Basic Detail Report

Dimensions Sheet (height x width): 19 x 30 1/8in. (48.3 x 76.5cm)