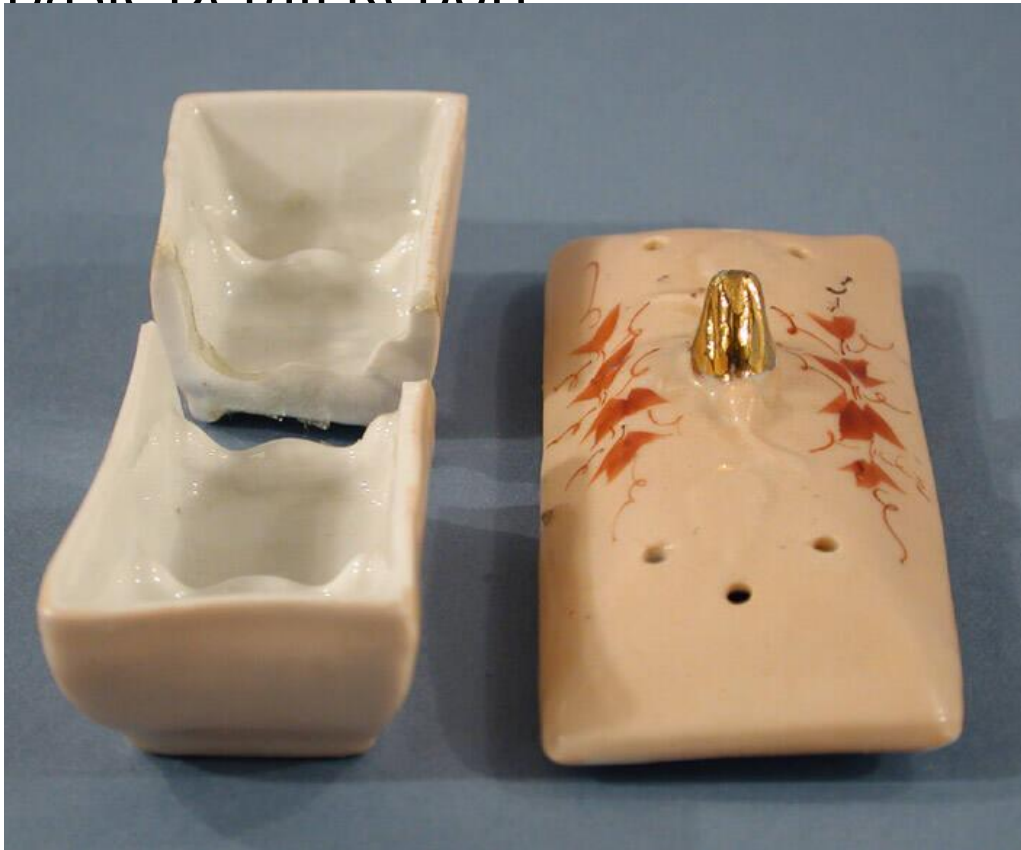


# Basic Detail Report



## Title Miniature Toothbrush Holder or Razor Box

Date late 19th century

Primary Maker Unknown

Medium Mold-formed porcelain with overglaze pink and red enamel, and gilding

Description Rectangular, lidded, porcelain toothbrush holder or razor box with gilding and overglaze pink and red enamel. The body of the container has been broken into two equally-sized pieces (.a and .b). The exterior of the container is painted with light pink enamel, while the interior is divided into four sections by three raised panels of porcelain with a scalloped top edge. The lid (.c) has raised decoration in the shape of two leaves and branches, and six holes punched into the top, three at either end. A small, gilded finial sits in the center of the lid. The top of the lid is painted with light pink enamel. Abstract leaves and vines have

# Basic Detail Report

been hand-painted in red enamel over the pink enamel, on either of the long sides of the top of the lid. The two broken pieces of the container (.a and .b) were probably repaired at some time in the past. A clear glue substance lines the broken edge of the pieces, and some paper-thin parts of the glue remnants extend beyond the edge of one of these pieces (.a).

Dimensions Primary Dimensions (height including lid x width x depth): 1 1/2 x 3 9/16 x 1 3/8in. (3.8 x 9 x 3.5cm)