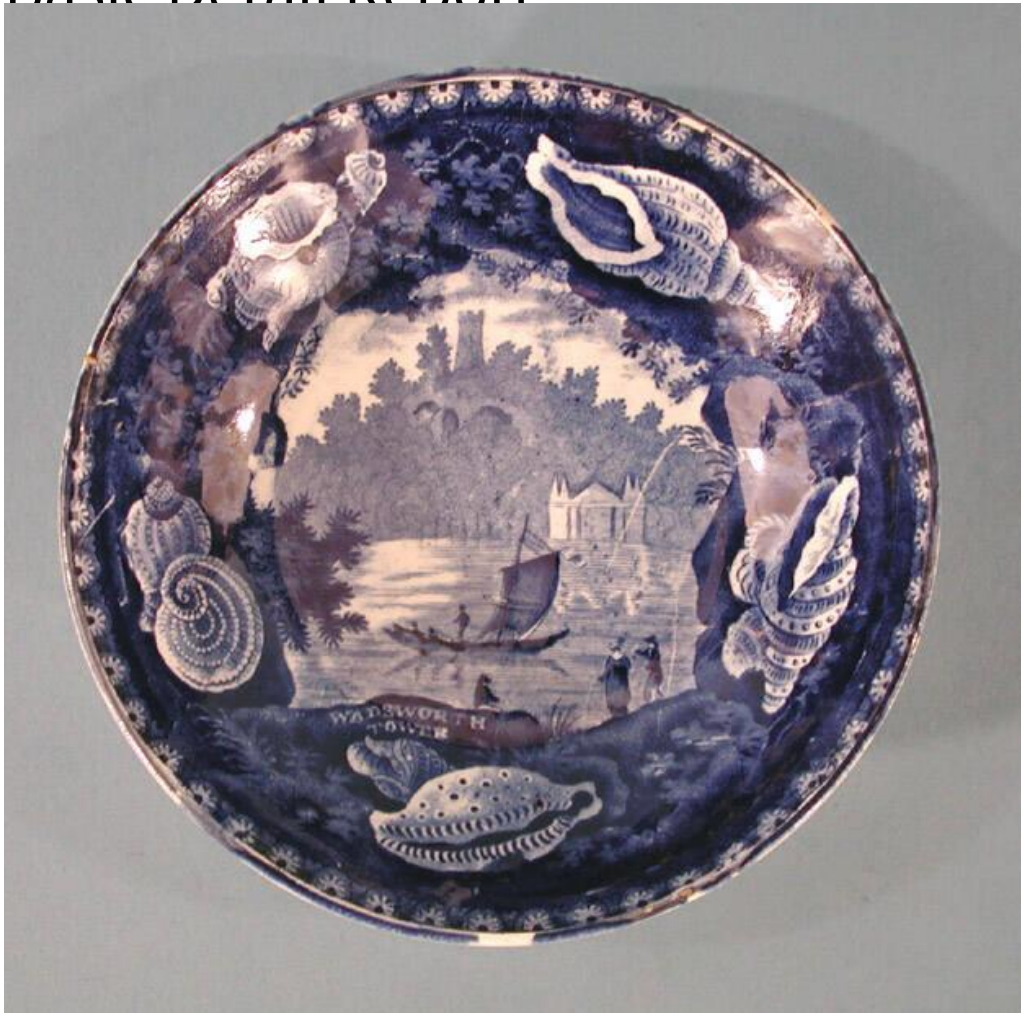


Basic Detail Report



Title Saucers

Date about 1840

Primary Maker Enoch Wood & Sons

Medium Mechanically-molded buff-colored earthenware with a blue-tinted glaze and underglaze cobalt blue decoration

Description Group of three round saucers made of buff-colored earthenware with a blue-tinted glaze, a type of ceramic known as pearlware. The saucers have the same transfer-printed pattern and border in a dark underglaze cobalt blue. The pattern, found in the center of each saucer, shows three people in a sailboat with a single mast and sail on a body of water. Two more individuals are

Basic Detail Report

standing and one is sitting on the shore in the near foreground. Beyond the river, a building sits on a shore at the base of a mountain. A crenellated tower is at the top of the mountain. Below the pattern, is the title "WADSWORTH/ TOWER". The pattern is surrounded by a border of white shells and light blue plants on a field of dark blue. The inside edge of the border is irregular, and the outside edge has a line of evenly spaced, small, white flowers. The saucers share the same pattern, but on one saucer, .15, the pattern is darker than the others. On this same saucer, there is a smudged line, about the width of a finger, in the center of the pattern. This is the only saucer with the maker's mark of "E. Wood & SONS". All three saucers have crazing on the glazed surface. There are two very small chips in the foot of saucer .15.

Dimensions Primary Dimensions (diameter of each saucer): 5 3/4in. (14.6cm)