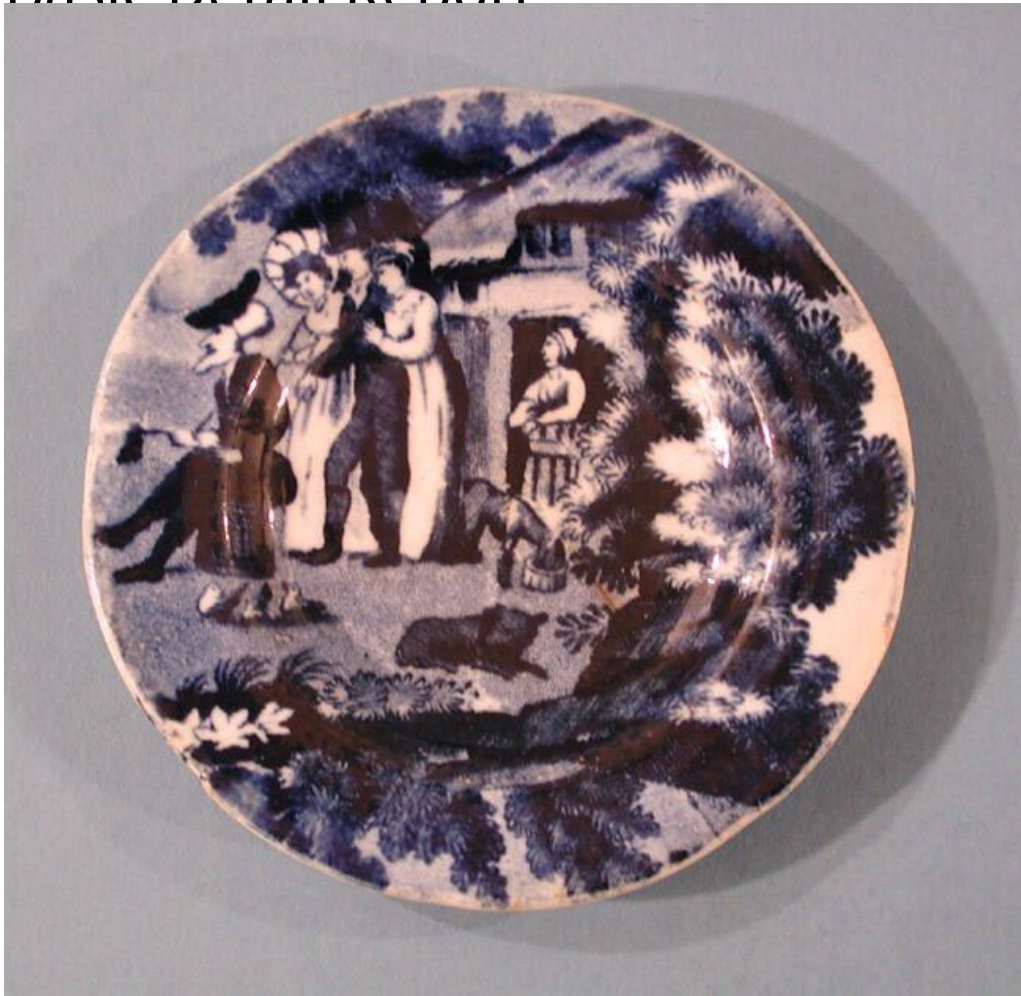


Basic Detail Report



Title Cup Plate

Date 1818-1834

Primary Maker James & Ralph Clews

Medium Mold-formed buff-colored earthenware with a blue-tinted glaze and underglaze cobalt blue decoration

Description Round, buff-colored earthenware cup plate with a blue-tinted glaze, a type of ceramic known as pearlware. The entire plate is covered with one transfer-printed pattern showing an older man in a dark suit and hat seated on the left, staring to the left at something not printed on the cup plate. The man has a pad of paper on his lap and a writing utensil in his right hand. Three

Basic Detail Report

individuals are standing behind him, and in the middle, a woman stands in the

door of a two-story house. All five individuals are looking to the left. To the right,

bushes and trees complete the pattern. There is a good amount of contrast

between the dark blues of the man's suit and the white elements of the pattern.

There is some light crazing visible on the back, and a small crack running from

the rim toward the center of the cup plate.

Dimensions Primary Dimensions (diameter): 3 1/2in. (8.9cm)