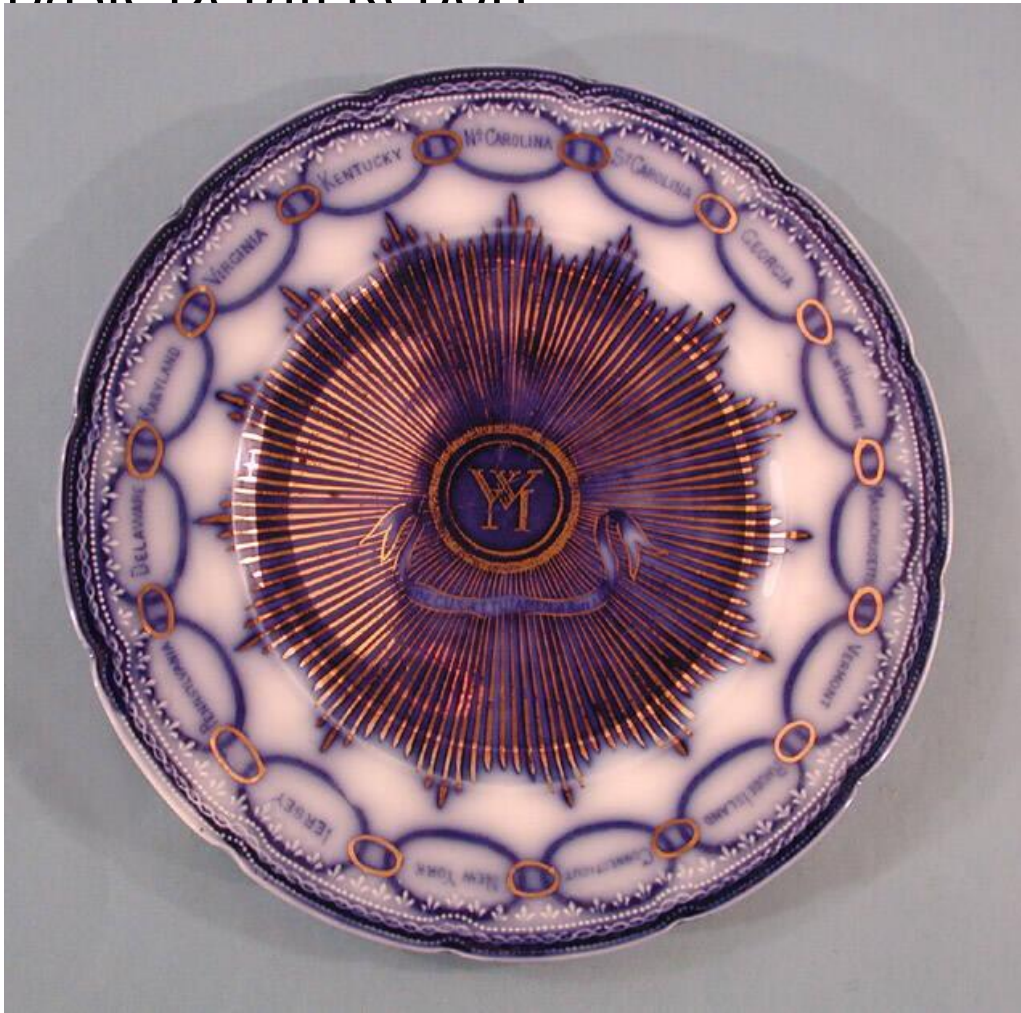


Basic Detail Report



Title Plate

Date late 19th-early 20th century

Primary Maker Mabel Edith Goodrich

Medium Mechanically-molded earthenware with underglaze cobalt blue decoration and overglaze gilding

Description Round, earthenware plate with a slightly scalloped edge and a transfer-printed underglaze cobalt blue decoration and overglaze gilding. The transfer-printed design was printed in a dark blue then made to run in the kiln, a type of ceramic known as flow blue. The pattern on the plate shows the letter "W" over the letter M" in the center, which stands for Martha Washington. The

Basic Detail Report

Latin motto "DECUS ET TUTAMEN AB ILLO" is located in a banner underneath

the initials. Both the initials and the banner are outlined in gilding. The initials

and motto sit in the center of a starburst pattern, in flow blue and gilding, that

extends to the inside of the plate's rim. The rim is decorated with the "Chain of

States" pattern, showing the names of fifteen states inside ovals: "No. Carolina,"

"So. Carolina," "Georgia," "New Hampshire," "Massachusetts," "Vermont,"

"Rhode Island," "Connecticut," "New York," "Jersey," "Pennsylvania,"

"Delaware," "Maryland," "Virginia," "Kentucky." The ovals are all connected by a

small ring of gilding, creating the appearance of a chain. Finally, the edge of the

rim has a raised decoration consisting of a line of fleur de lis, dots, rope, and

another line of dots. The rim was also decorated with flow blue; however, the

raised decoration stands out in white. There is crazing visible on the white

portions and underside of the plate. The gilding is beginning to wear away.

Dimensions Primary Dimensions (diameter): 9in. (22.9cm)