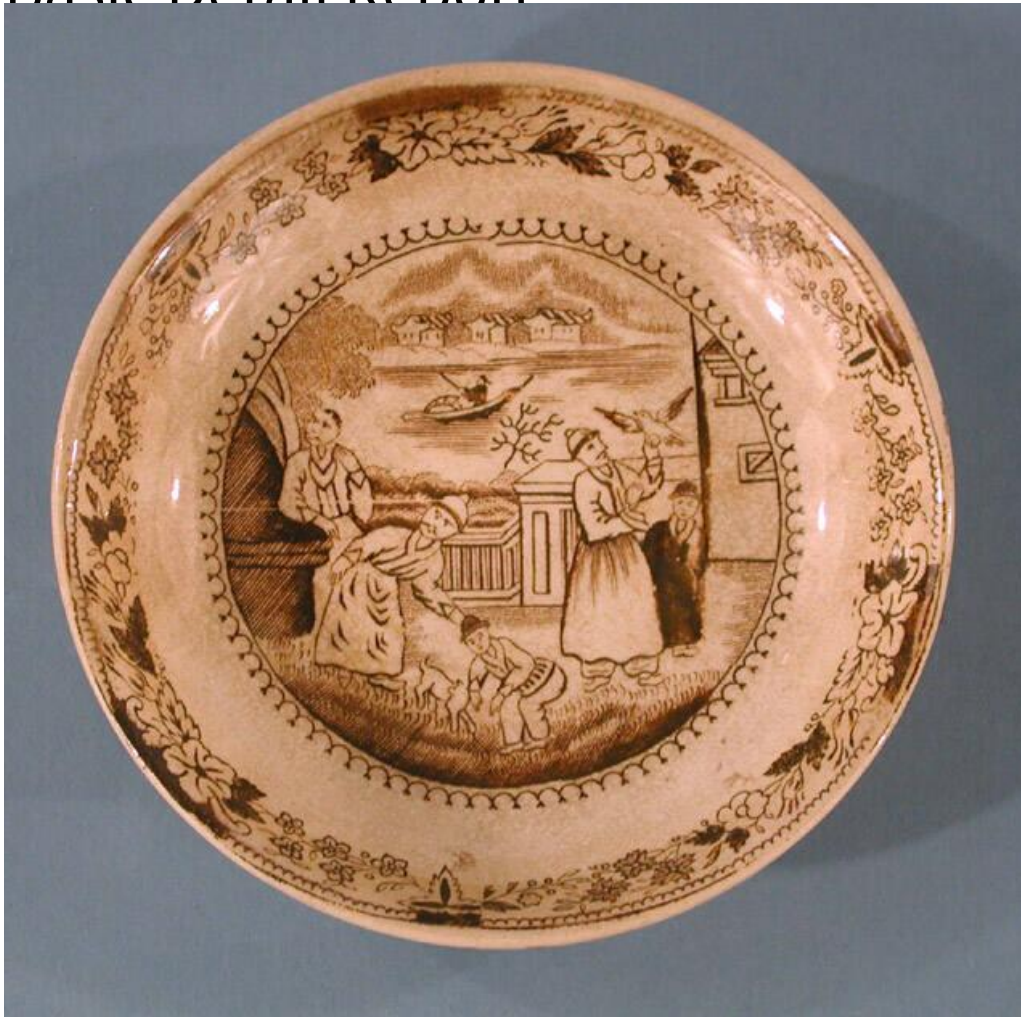


Basic Detail Report



Title Saucer

Date 1815-1835

Primary Maker Staffordshire potteries

Medium Drape-molded cream-colored earthenware with overglaze brown enamel

Description Round, cream-colored earthenware saucer, a type of ceramic known as creamware. The saucer is decorated with a Chinese-influenced transfer-printed design in brown enamel. A round scene in the center of the saucer shows five figures, including one holding a bird and a boy petting a cat. They are standing in a grassy area overlooking water, with Chinese structures in the

Basic Detail Report

distance. This is surrounded by a border that consists of a scalloped line.

Another border at the rim consists of a narrow line of varied flowers and leaves

surrounded by a scalloped line. The saucer has an overall crazing which has led

to variations in the color of its surface.

Dimensions Primary Dimensions (diameter): 4 7/8in. (4 7/8in.)