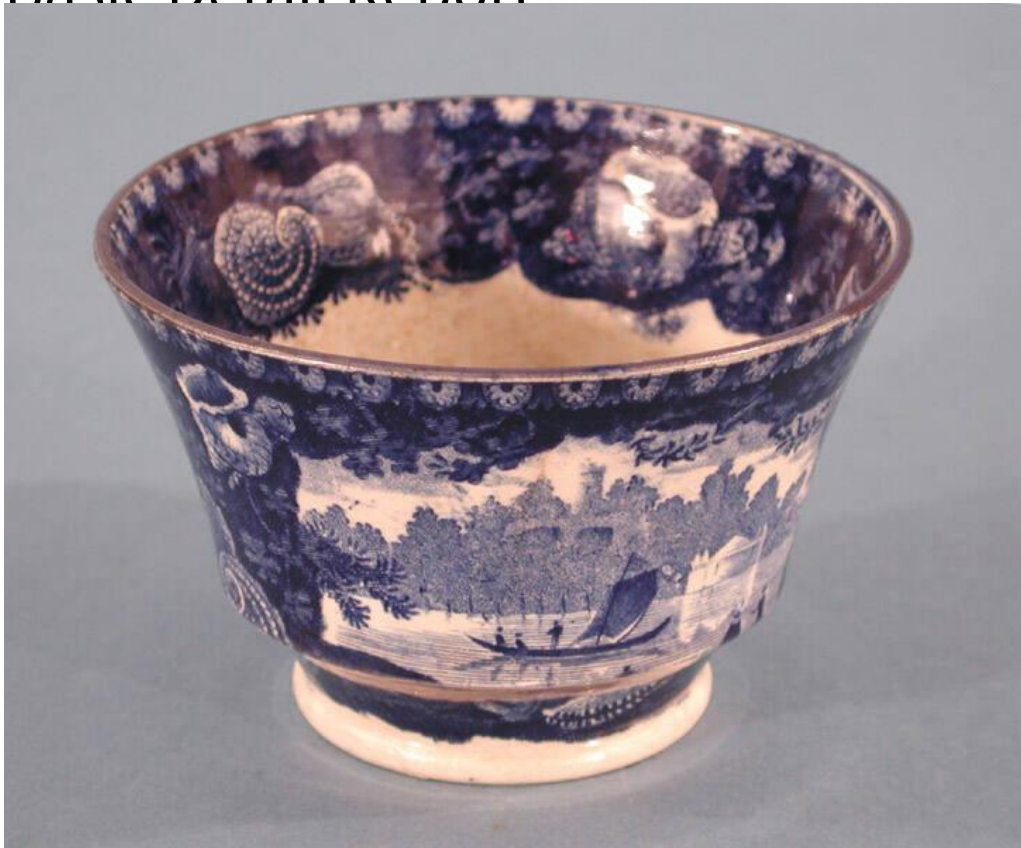


# Basic Detail Report



## Title Tea Bowls

Date about 1840

Primary Maker Enoch Wood & Sons

Medium Mechanically-molded buff-colored earthenware with a blue-tinted glaze and underglaze cobalt blue decoration

Description Group of seven round tea bowls made of buff-colored earthenware with a blue-tinted glaze, a type of ceramic known as pearlware. Each tea bowl is decorated with the same transfer-printed underglaze cobalt blue pattern and border. The pattern, printed twice on the outside of each tea bowl, shows three people in a sailboat with a single mast and sail on a body of water. Two more individuals are standing and one is sitting on the shore in the near foreground. Beyond the river, a building sits on a shore at the base of a mountain. A

# Basic Detail Report

crenellated tower is at the top of the mountain. The printed patterns are

surrounded by a border of white shells and light blue plants on a field of dark

blue. There is an additional border at the rim of each tea bowl, consisting of a

line of evenly spaced small white flowers. The shell border is printed again on

the inside rim of each tea bowl. A small, transfer-printed pattern on the inside

bottom of each tea bowl shows the same tower and a portion of the wooded

mountain as described above. Although each tea bowl has the same pattern, tea

bowls .4, .5, .6, and .7 are printed in a darker blue than the others. Some of the

tea bowls have minor imperfections in the ceramic and the glaze, a condition

that would have occurred during manufacture. All of the tea bowls have crazing

to some degree; tea bowls .1 and .3 have the most crazing, which has resulted in

slight discoloration. There is a crack in the rim of tea bowl .1 that runs half way

down the side. tea bowls .4 and .7 each have small chips in the foot.

Dimensions Primary Dimensions (height x diameter of .1 and .3): 2 1/2 x 3 5/8in.

(6.4 x 9.2cm) Primary Dimensions (height x diameter of .2, .4, .5, and .7): 2 1/2 x 3

3/4in. (6.4 x 9.5cm) Primary Dimensions (height x diameter of .6): 2 1/2 x 3 5/8in.

(6.4 x 9.2cm)