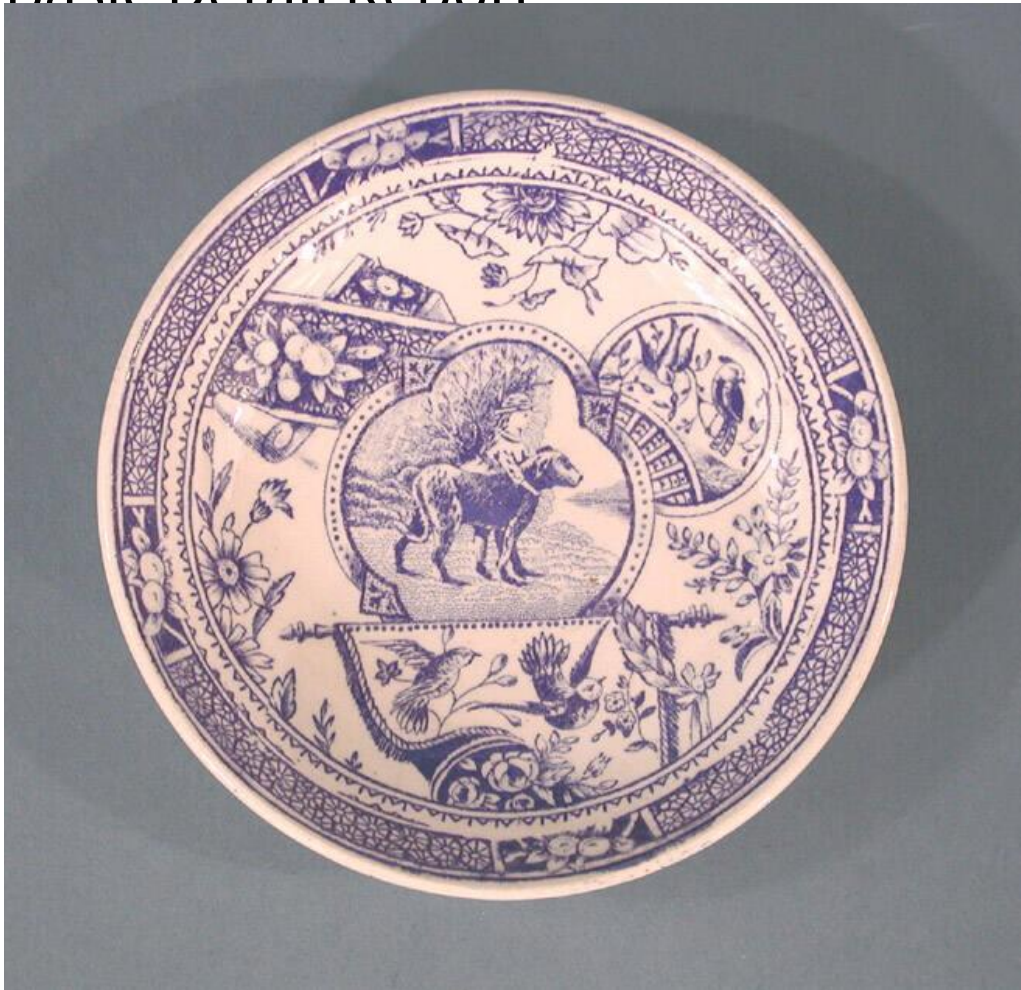


Basic Detail Report



Title Child's Saucers

Date about 1925

Primary Maker Unknown

Medium Mechanically-molded earthenware with underglaze blue decoration

Description Group of five round, white, earthenware saucers, part of a larger partial set of miniature teawares consisting of a teapot, lidded sugar bowl, creamer, slop bowl, five saucers, six plates, and four teacups. The entire set is decorated with a bright blue, underglaze, transfer-printed pattern and border in the Aesthetic style. The pattern found on most pieces in the set consists of a central scene of a small girl standing behind a large dog, both looking to the

Basic Detail Report

right. The scene of the girl and dog is surrounded by a border of a dotted line between two solid lines, interrupted three times by a triangular area with small stylized flowers inside. This is surrounded by a circular area with various decorative elements inside. There is a semi-circular area with two birds inside, a panel of blue and white fabric with white flowers and fruit over the fabric, and a square area with two birds and more flowers. These three decorative elements are separated from each other by areas of white and various flowers. The entire pattern, the scene of the girl and dog surrounded by various decorative elements, is surrounded by a line of alternating triangles and short lines. The border, found at the rim of many pieces in the set, consists of an octagonal lattice pattern interrupted periodically by rectangular areas of blue with white flowers on top. The six miniature saucers have the above described pattern in the center, surrounded by the border at the rim. There is crazing over all the surfaces.

Dimensions Primary Dimensions (diameter of each saucer): 4 1/2in. (11.4cm)