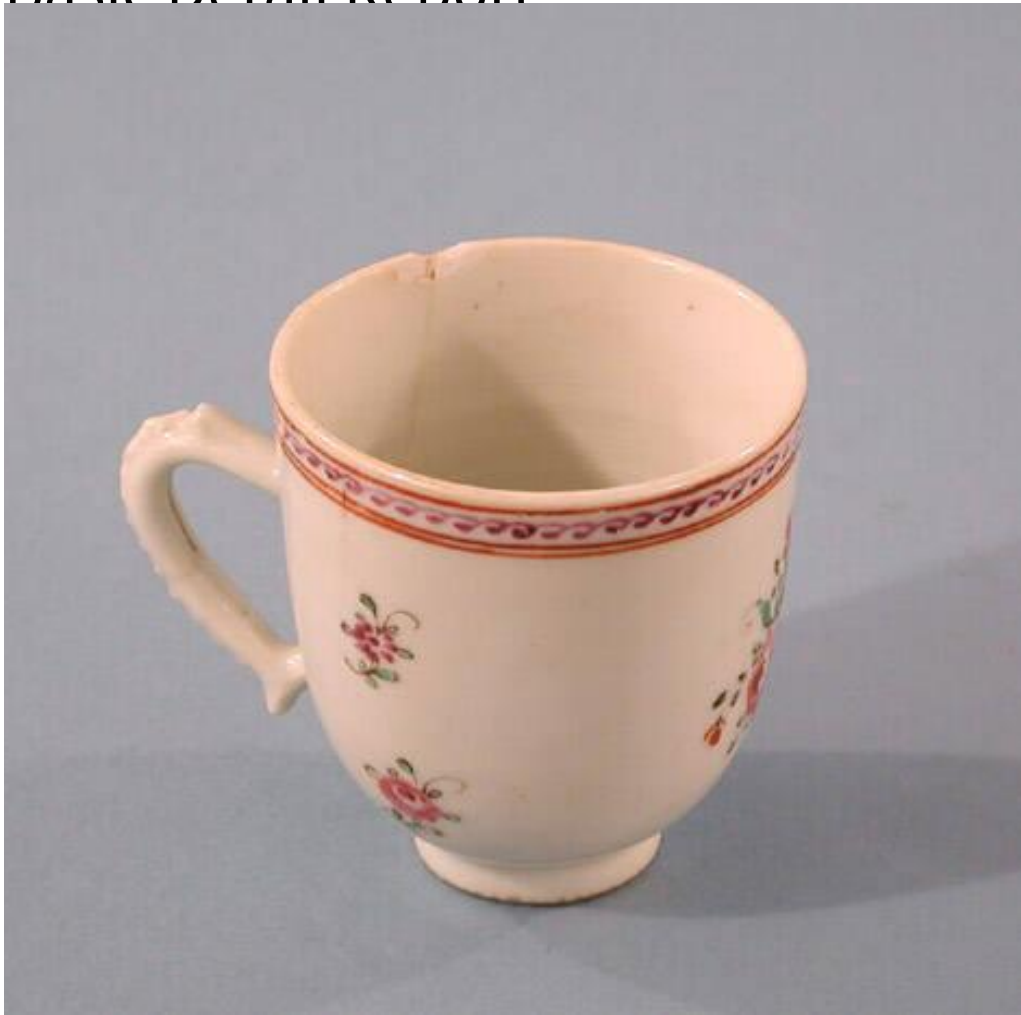


Basic Detail Report



Title Teacup

Date early 19th century

Primary Maker Unknown

Medium Wheel-thrown Chinese export porcelain with overglaze enamels in purple, pink, green, black, and orange

Description Small, round, Chinese export porcelain teacup with hand-painted overglaze enamels in purple, pink, green, black, and orange. The teacup has a small, molded handle. Opposite the handle is the cup's primary floral motif, consisting of a pink flower surrounded by smaller green, purple, and orange flowers all outlined in black. To the left and right of the handle are two

Basic Detail Report

additional, smaller, identical floral arrangements consisting of a single purple flower over a single pink flower. The final decoration on the teacup is at the rim, where there is a border of three orange enamel lines. Between the top two lines is a scalloped line of purple enamel, painted in such a way as to imitate the appearance of waves. There is a chip in the rim to the left of the handle, with a hairline crack emerging from the chip and running half way down the side of the teacup. Overall, the enamel shows light wear; however, the border to the left of the rim shows significant wear.

Dimensions Primary Dimensions (height x width including handle x depth): 2 5/8 x 3 3/8 x 2 3/8in. (6.7 x 8.6 x 6cm)