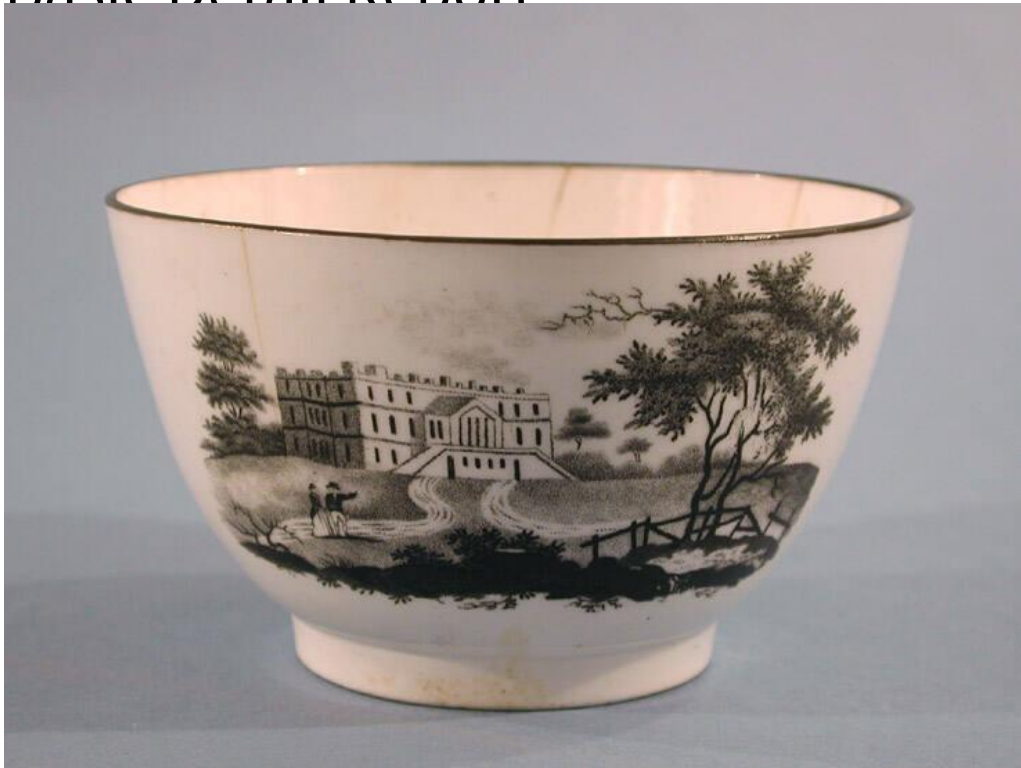


Basic Detail Report



Title Tea Bowl

Date about 1830-1860

Primary Maker Staffordshire potteries

Medium Mechanically-molded porcelain with black enamel decoration

Description Large, round, porcelain tea bowl with black enamel transfer-printed decoration. Two sides of the tea bowl have a different printed landscape, each showing a large residential structure. On one side, a three-story home is located on a small hill. There is a tree and bridge in the right foreground. A man and a woman walk up a path to the house in the left foreground. On the other side of the tea bowl, the landscape shows a three-story structure with an extensive front porch. The house sits on a small hill, and there are four sheep grazing on the lawn in the foreground. There is another structure in the left background, and a body of water in the right background. Trees to the left and the right of the

Basic Detail Report

landscape frame the scene. Finally, the tea bowl is decorated with a solid line of black enamel at the rim. There are four hairline cracks that begin at the rim and travel about half way down the side of the tea bowl.

Dimensions Primary Dimensions (height x diameter): $2 \frac{3}{8} \times 4 \frac{1}{8}$ in. (6 x 10.5cm)