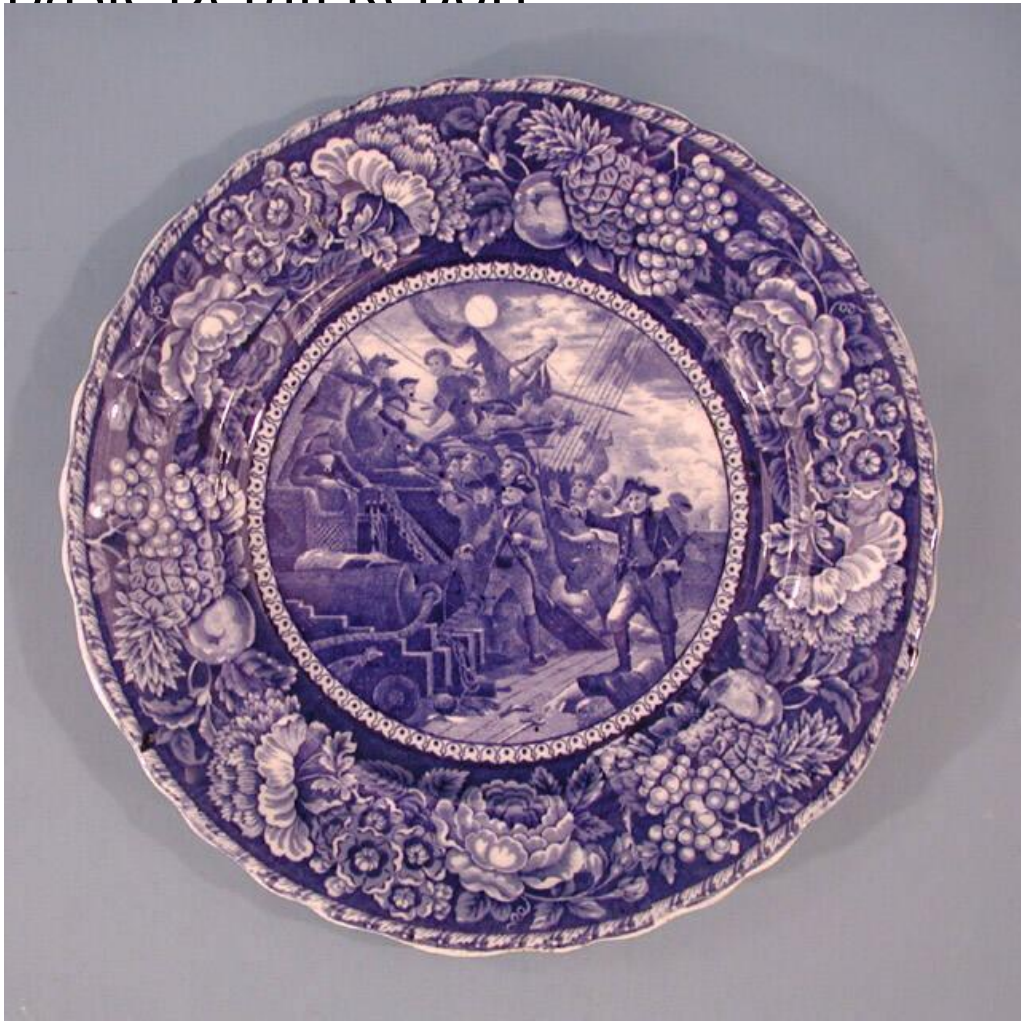


# Basic Detail Report



## Title Plate

Date late 19th-early 20th century

Primary Maker Staffordshire potteries

Medium Mechanically-molded earthenware with underglaze cobalt blue decoration

Description Round, earthenware plate with a transfer-printed underglaze cobalt blue pattern showing a man in a colonial-era naval uniform giving orders to his crew on the deck of a ship. The man stands to the right, with a fallen comrade at his feet. He holds a pistol in his right hand and is pointing to the left of the scene. To the left, several crew members man cannons and fight off an attack from a

# Basic Detail Report

nearby ship. Sailors and the mast of the attacking ship are visible on the left,

looming above the scene. The sky is cloudy, with a full moon above. This pattern

is surrounded by a wide border at the rim of the plate, consisting of clusters of

flowers and fruit. The entire plate has crazing over all the surfaces.

Dimensions Primary Dimensions (diameter): 9 7/8in. (25.1cm)