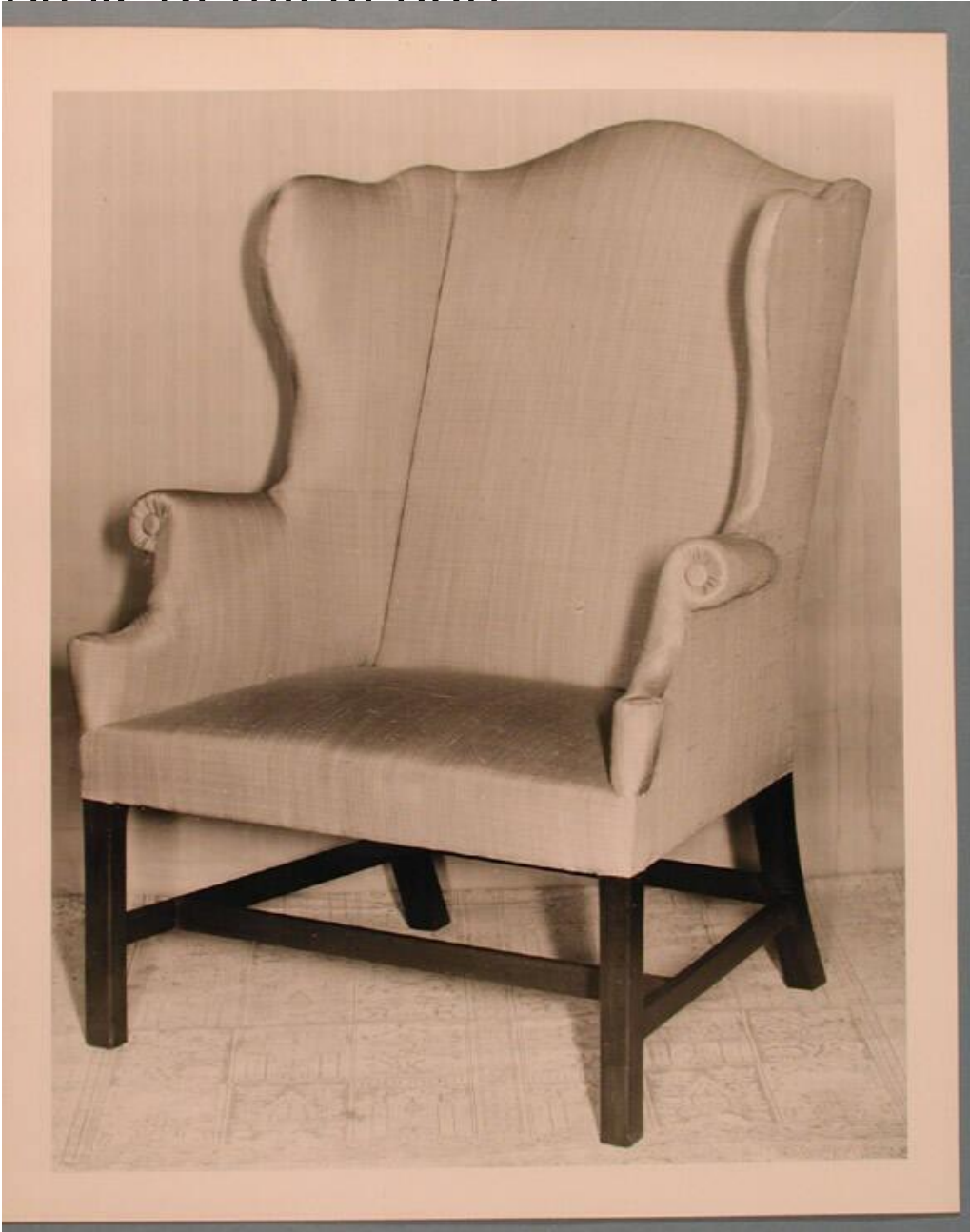


# Basic Detail Report



## Title Designs for Easy Chairs

Date 1960-1980

Medium Drawings; graphite and ink on cardboard

Description Fourteen drawings, nine cardboard patterns, and one note relating to easy chairs worked on by Paul Koda. Includes: Seven cardboard patterns and three drawings for Queen Anne wing chair at Silas Deane House (2004.30.13.1.1-.10) Two drawings for easy chair (2004.30.13.2.1-.2) Drawing for French wing

# Basic Detail Report

chair, 1690 (2004.30.13.3.0) Two cardboard patterns and eight drawings for wing

chair at Hartford Steam Boiler Insurance and Inspection Company

(2004.30.13.4.1-.10) One note for wing chair from John Walton to Hartford Steam

Boiler Insurance and Inspection Company (2004.30.13.5.0) Photographs of easy

chairs

Dimensions Sheet (height x width or smaller): 44 1/4 x 28 1/4in. (112.4 x 71.8cm)