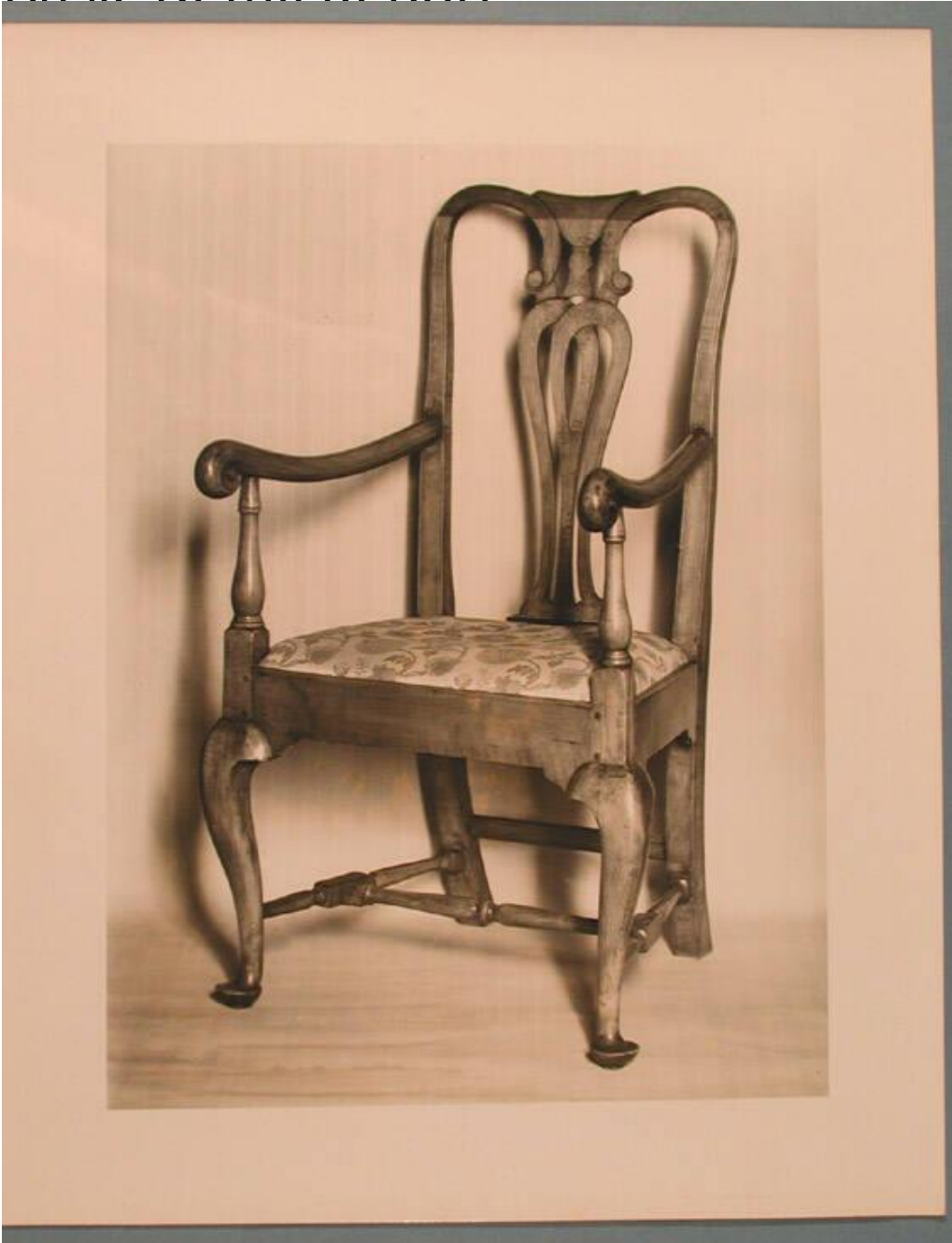


# Basic Detail Report



## Title Designs for Queen Anne Chairs

Date about 1965

Medium Drawings; graphite and ink on cardboard Pattern; wood Photography;  
gelatin silver prints on paper

Description Six drawings and one wood pattern relating to Queen Anne style  
chairs worked on by Paul Koda. Includes: Drawing for maple chair with rush seat

# Basic Detail Report

(2004.30.10.1.0) Drawing for Pennsylvania Queen Anne chair (2004.30.10.2.0)

Four drawings for walnut Queen Anne chair (2004.30.10.3.1-4) Wood pattern for

urn splat (2004.30.10.4.0) Photographs of Queen anne chairs

Dimensions Sheet (height x width or smaller): 44 1/4 x 28 1/4in. (112.4 x 71.8cm)