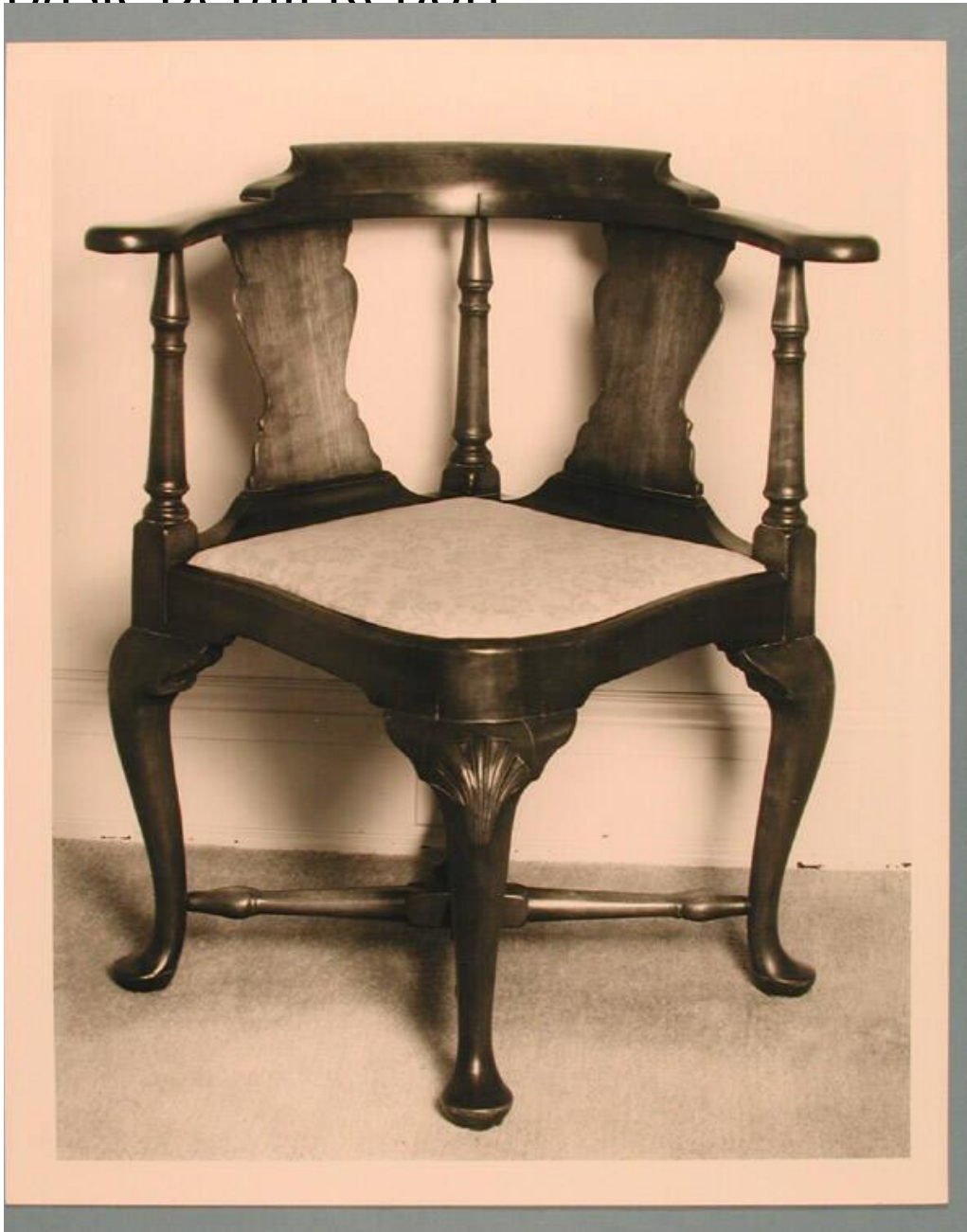


Basic Detail Report



Title Designs and Photographs for Corner Chairs

Date about 1945 to 1996

Medium Drawings; graphite and ink on cardboard Photography; gelatin silver prints on paper

Description Six drawings, seven cardboard patterns, and one note relating to corner chairs worked on by Paul Koda. Includes: One cardboard pattern for

Basic Detail Report

corner chair splat (2004.30.8.1.0) Five drawings and two cardboard patterns for

William and Mary style corner chair (2004.30.8.2.1-.7) Four cardboard patterns,

one drawing, and a note for Queen Anne style corner chair (2004.30.8.3.1-.6)

Photographs of corner chairs

Dimensions Sheet (height x width or smaller): 32 x 5 1/4in. (81.3 x 13.3cm)