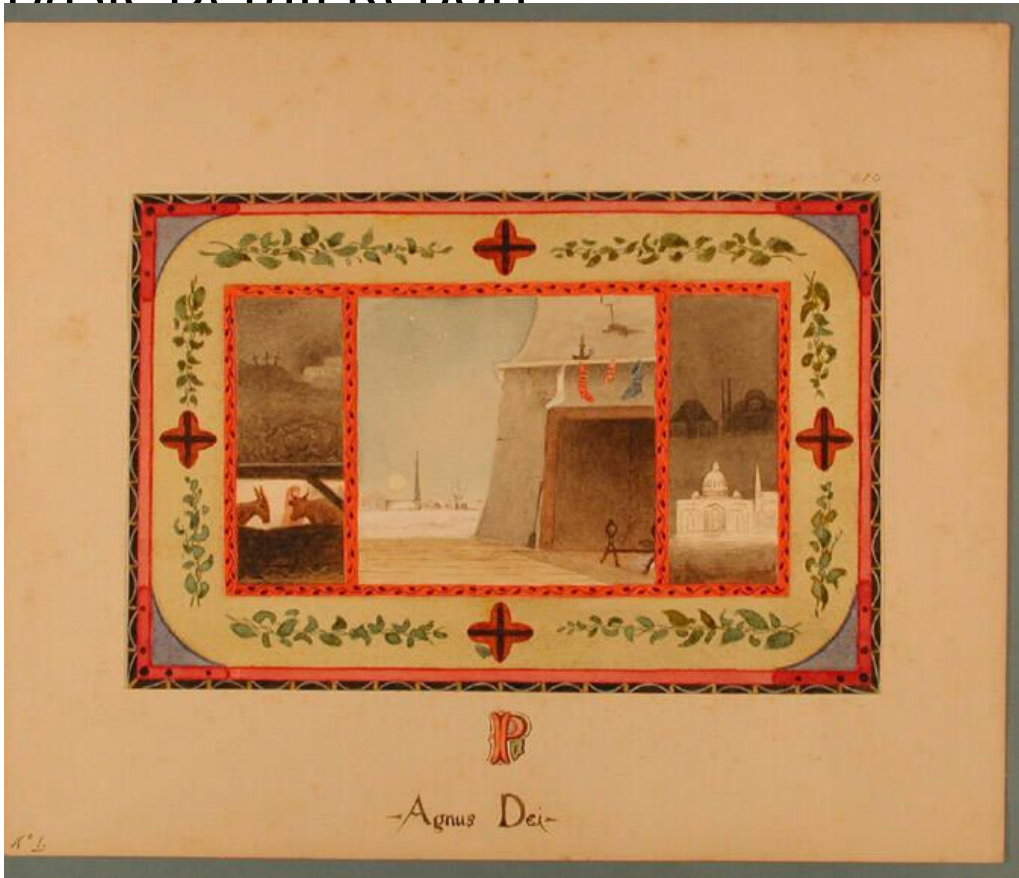


# Basic Detail Report



## Title Christmas Cards.

Date late 19th-early 20th century

Primary Maker Ellen Mindwell Moore

Medium Drawings; watercolor on wove paper

Description No. 1 consists of five panels surrounded by a decorative border. In the center, stockings hang from the mantle of a fireplace. A candle is in a candlestick on the mantle. Andirons are in the fireplace. Snow is on the ground in the background. A church is in the distance. The sun is in the sky. In the upper left panel, three crosses are on a hill. A city is in the right background. It is dark. In the lower left panel, a donkey and a cow are in a stable. In the upper right panel are two buildings, including perhaps a mosque. In the lower right panel is a church with a dome, perhaps Saint Peter's in Rome. No. 2 consists of a single

# Basic Detail Report

panel with a decorative border. Two shepherds with crooks and two sheep are

looking at a vision of a cross in the sky. A star is in the center of the upper

border. Two sprigs of lily of the valley are in the left and right borders.

Dimensions Primary Dimensions (image height x width): 6 7/8 x 9in. (17.5 x 22.9

cm) Sheet (height x width): 6 7/8 x 9in. (17.5 x 22.9cm) Mount (height x width): 12

1/16 x 12in. (30.6 x 30.5cm)