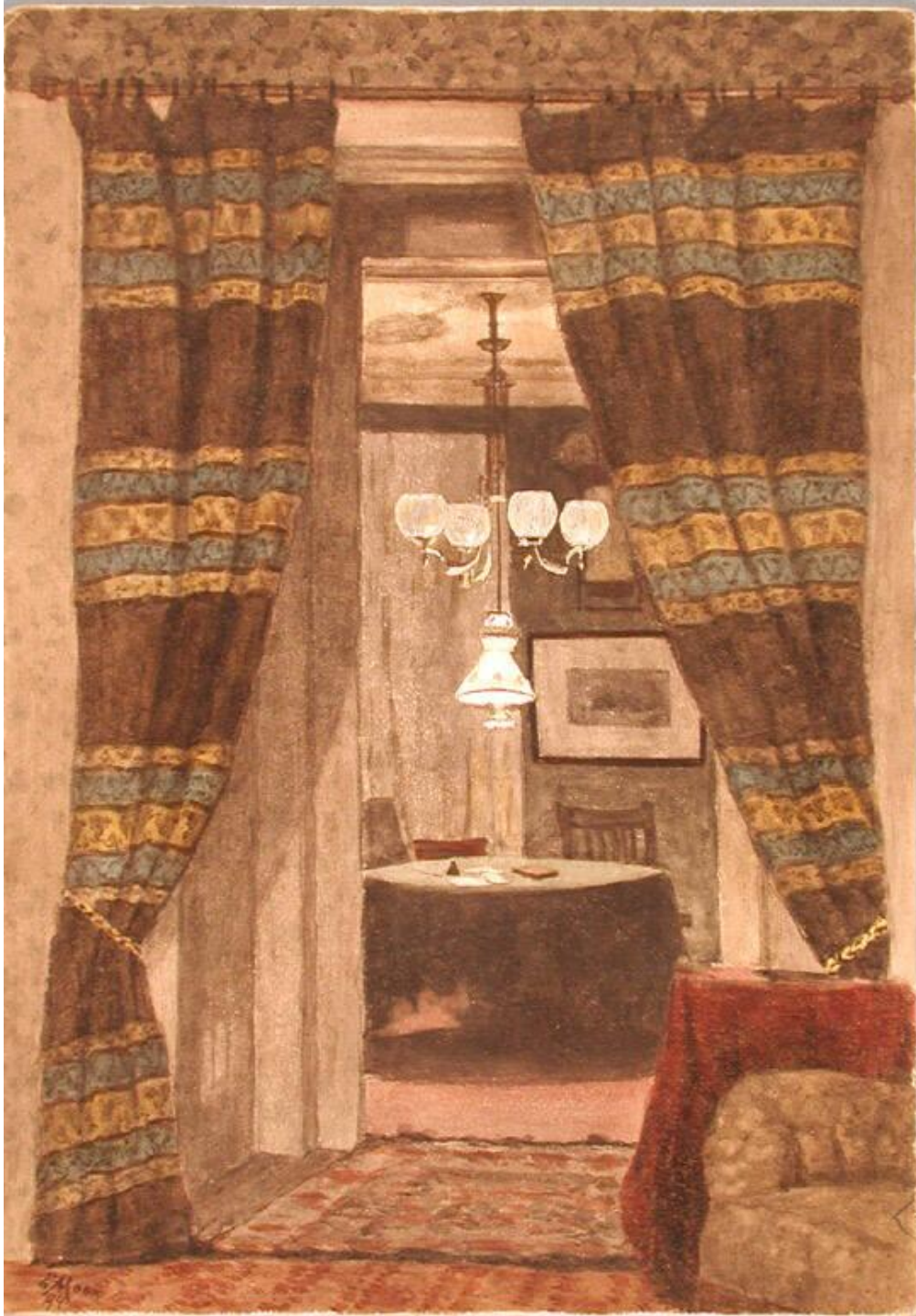


Basic Detail Report



Title Landscapes, Interiors, Still Lives, and Flowers.

Date 1881-1908

Primary Maker Edwin Augustus Moore

Basic Detail Report

Medium Drawings; watercolor, Chinese white, pastel, pencil on wove paper, one mounted on cardboard, one on particle board

Description Subjects include landscapes, interiors, still lifes, flowers, and a figure drawing. Many landscapes are country scenes, with farm buildings, farm equipment, haystacks, flowering fruit trees, laundry hanging on clotheslines, and a mill pond. Autumn landscapes include fall foliage. A winter landscape includes snow. Interiors include a room with a table and a hanging lamp. Still lifes include a clock and a Chinese fan on a mantelpiece. The sole figure drawing is of a sleeping girl, seated on a bench outdoors, at night, with a crescent moon and stars in the sky. One drawing is a view of Boulogne sur Mer, seen from the sea. Another appears to be High Bridge, New York City. One is of houses in the Asylum Hill neighborhood of Hartford. Several appear to be in the neighborhood of the Moore home in Kensington, Connecticut.

Dimensions Primary Dimensions (image height x width): 10 5/8 x 14 1/2in. (27 x 36.8cm) or smaller Sheet (height x width): 10 5/8 x 14 1/2in. (27 x 36.8cm) or smaller