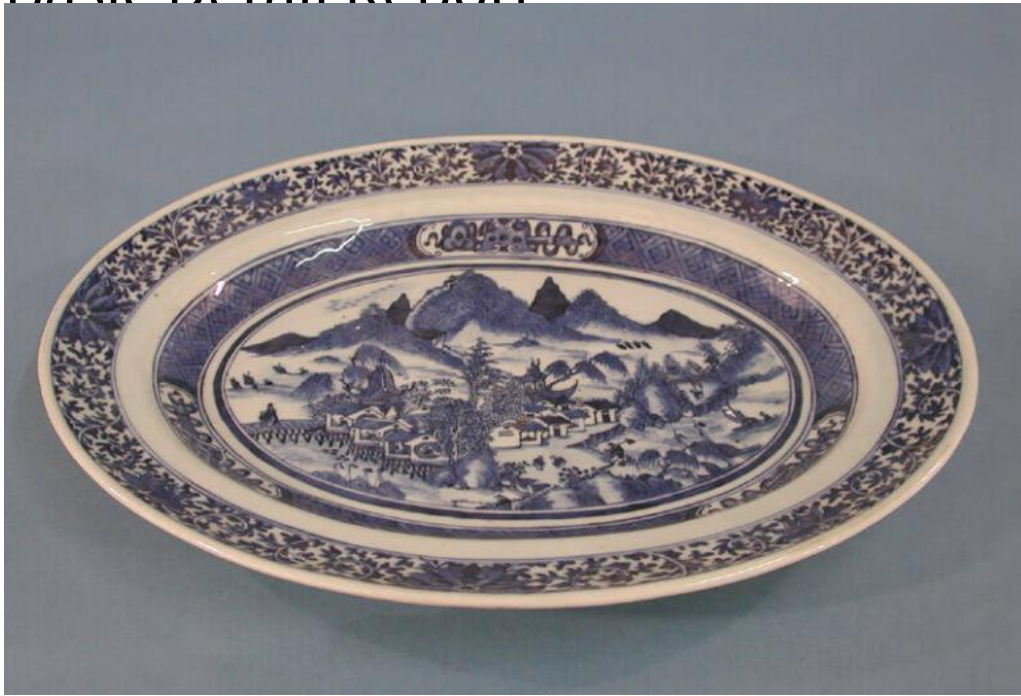


Basic Detail Report



Title Platter

Date late 18th-early 19th century

Primary Maker Unknown

Medium Drape-molded Chinese export porcelain with underglaze cobalt blue decoration

Description Oval Chinese export porcelain platter with hand-painted underglaze cobalt blue decoration; the platter is a type of Chinese export porcelain known as Nankingware. The underglaze decoration shows an elaborate and well painted Chinese landscape in various shades of blue. In the middle of the landscape, a tree stands at the edge of a body of water with two groups of Chinese structures on a hill behind the tree. A path winds up the side of one mountain to a fourth structure on the side of the mountain. A bridge and path cross the river near the structures. Several boats float in the water, and many small figures populate the buildings and landscape. The landscape is located on

Basic Detail Report

the bottom surface of the platter and is surrounded by a series of borders. The

first is a plain blue line, followed by a field of white, followed by a border

consisting of a band of blue with darker lines creating a diamond, or lattice,

pattern inside. At three points, this border is interrupted by an area of white

containing a wavy line and various figures and geometric patterns (perhaps

inspired by the Eight Taoist Immortals and their symbols). This border is

surrounded by a field of white, then a border of scrolls, leaves, and abstract

floral motifs at the rim of the platter. Imperfections in the porcelain appear as

black dots on the surface.

Dimensions Primary Dimensions (width x depth): 14 7/8 x 11 3/4in. (37.8 x 29.8

cm)