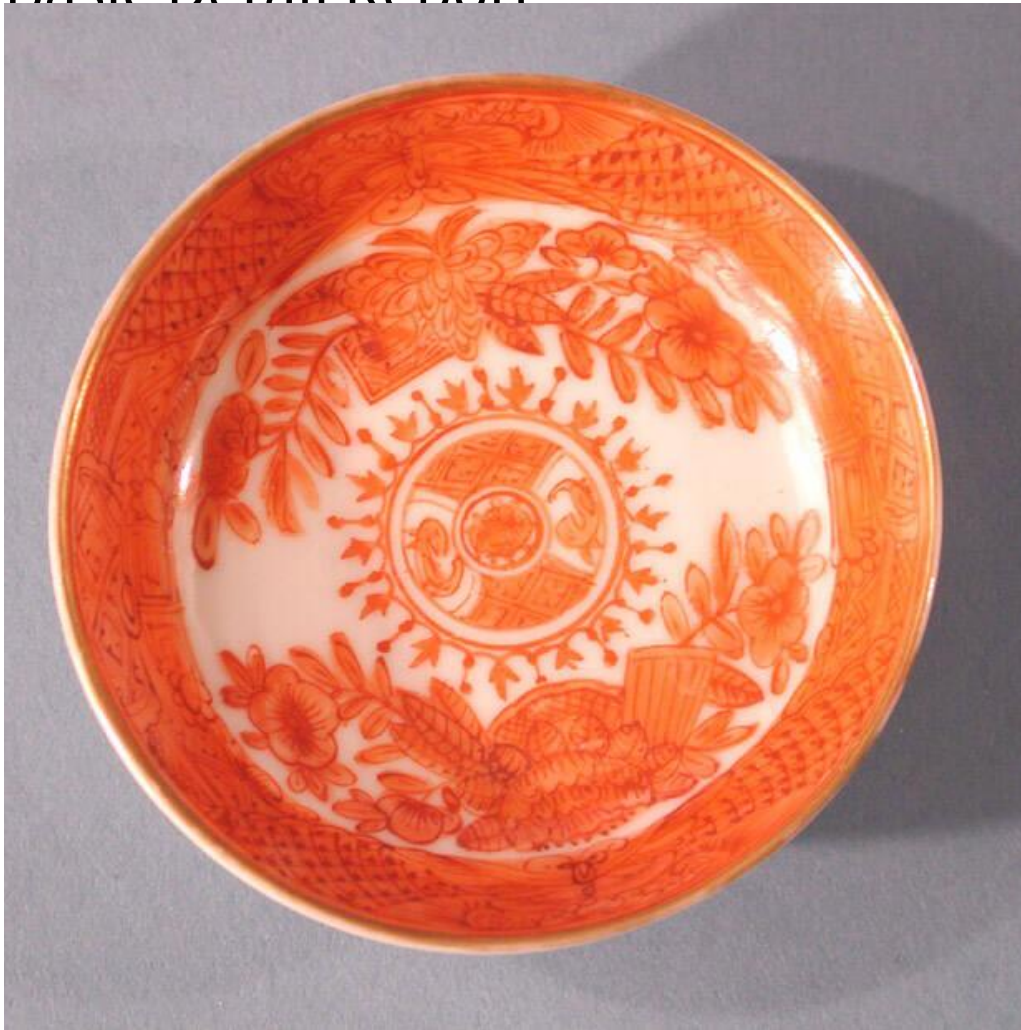


Basic Detail Report



Title Butter Pats

Date 1800-1810

Primary Maker Unknown

Medium Wheel-thrown Chinese export porcelain with overglaze gilding and orange enamel

Description Group of fifteen (four are missing) small, round, Chinese export porcelain butter pats with overglaze, hand-painted orange enamel decoration in the Fitzhugh pattern. The Fitzhugh pattern consists of two groups of flowers and emblems, or geometric shapes, evenly spaced around a central circular medallion. This central medallion is a circular floral arrangement surrounded by

Basic Detail Report

a border consisting of a band of orange with darker lines creating a latticework, or diaper, pattern inside. At two points, this border is interrupted by an area of white enamel with a small orange animal (possibly a dog). This is surrounded by a "Nanking" border, consisting of a series of lines that alternate between having an orange dot at either end or having an arrow pointing toward the central panel. The Fitzhugh pattern appears in the center of each plate and is surrounded by an elaborate border composed of geometric shapes, insects, and flowers on a field of orange enamel. There is a line of gilding at the outer edge of the rim. Imperfections in the porcelain appear as black dots or lines on the surface of the plate. Butter pat .29 has a round white sticker with a jagged edge adhered to the bottom. A hand-written pencil inscription reads, "Red Nankin/ Conn/ 124". The gilding on the rims of all the butter pats are slightly worn. Butter pat .30 has a small chip in the rim. Butter pat .34 has a series of small chips in the foot. Butter pats .37-.40 were unlocated at the time of cataloging.

Dimensions Primary Dimensions (diameter of butter pats .26-.36): 2 5/8in. (6.7 cm)