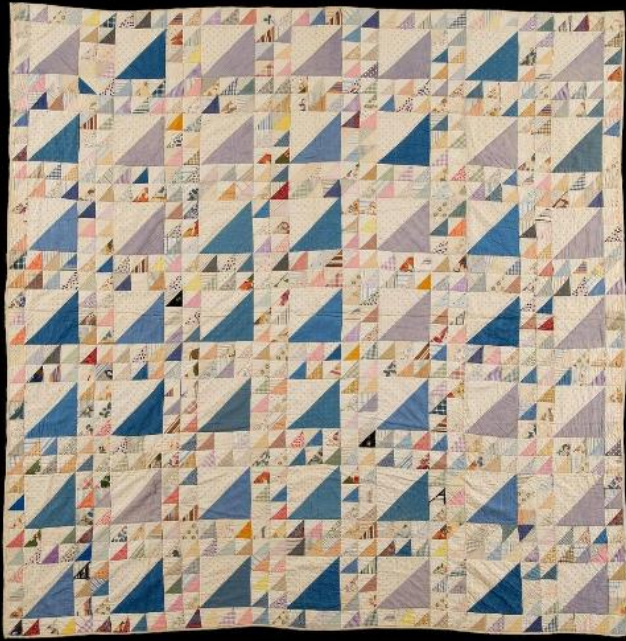


Basic Detail Report



Title Pieced Quilt

Date about 1940-1955

Primary Maker Edith Chase

Medium Hand-stitched and machine-stitched plain-woven cotton

Description Pieced quilt consisting of a machine-pieced top of plain-woven cotton, batting, and a white plain-woven cotton backing; the three layers are joined with a hand-stitched quilting pattern. The fabric used on the pieced top are a range of medium colors, primarily blue, in a range of small floral and geometric prints. The pieced pattern consists of large square blocks each formed by a pair of isosceles triangles. The square blocks are each surrounded by two rows of pieced triangular sashing. The hand-stitched quilting pattern follows the shape of the blocks. Each side of the quilt has machine-stitched straight grain white fabric edging. Condition: Three of four small black triangles on the pieced top have shattered.

Basic Detail Report

Dimensions Primary Dimensions (length x width): 76 1/2 x 77in. (194.3 x 195.6cm)