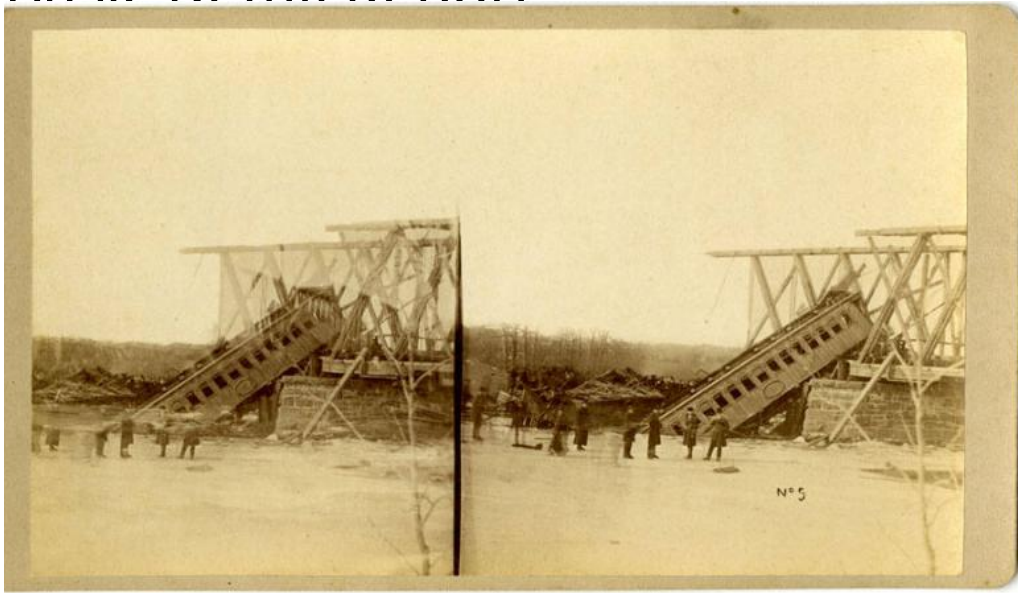


Basic Detail Report



Title Railroad Wreck on Tariffville Bridge.

Date 1878

Primary Maker Nicholas R. Worden

Medium Photography; albumen prints on paper on cardboard mount

Description Views of wrecked railroad cars hanging from a partially destroyed iron bridge. The bridge crosses the Farmington River, which appears to be mostly frozen. Several men stand on the ice looking on at the wreck and posing for the camera.

Dimensions Primary Dimensions (individual image height x width): 3 5/8 x 6 1

/4in. (9.2 x 15.9cm) Mount (height x width): 3 7/8 x 7in. (9.8 x 17.8cm)