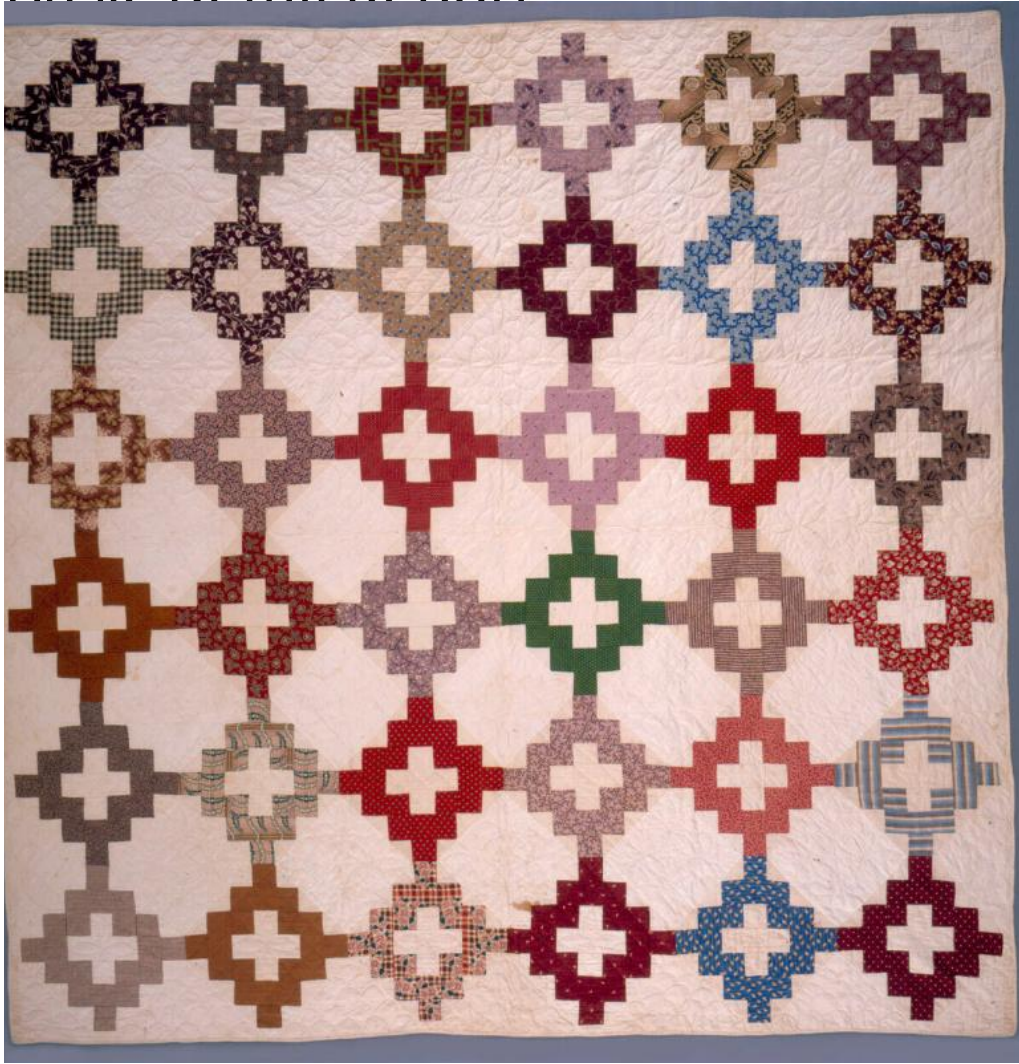


Basic Detail Report



Title Pieced Quilt

Date 1859

Primary Maker Lucy Atwater

Medium Hand-stitched, plain-woven cotton

Description Pieced quilt in a Chimneysweep pattern. The quilt consists of a pieced top of plain-woven cotton, batting, and a white plain-woven cotton backing; the three layers are joined by a hand-stitched quilting pattern. The colored cotton fabrics, printed or woven in red, blue, brown, purple and green are in blocks and squares that surround a white X-shaped block. These are

Basic Detail Report

quilted in a grid pattern. Between each colored block is a large white square of cotton, each quilted with a floral, pinwheel, scalloped or geometric pattern. The backing is plain-woven cotton. Condition: The quilt top has three larger areas of brown stains and several smaller scattered brown stains. There is at least one small tear in the backing.

Dimensions Primary Dimensions (length x width): 81 3/4 x 82 1/2in. (207.6 x 209.6 cm)