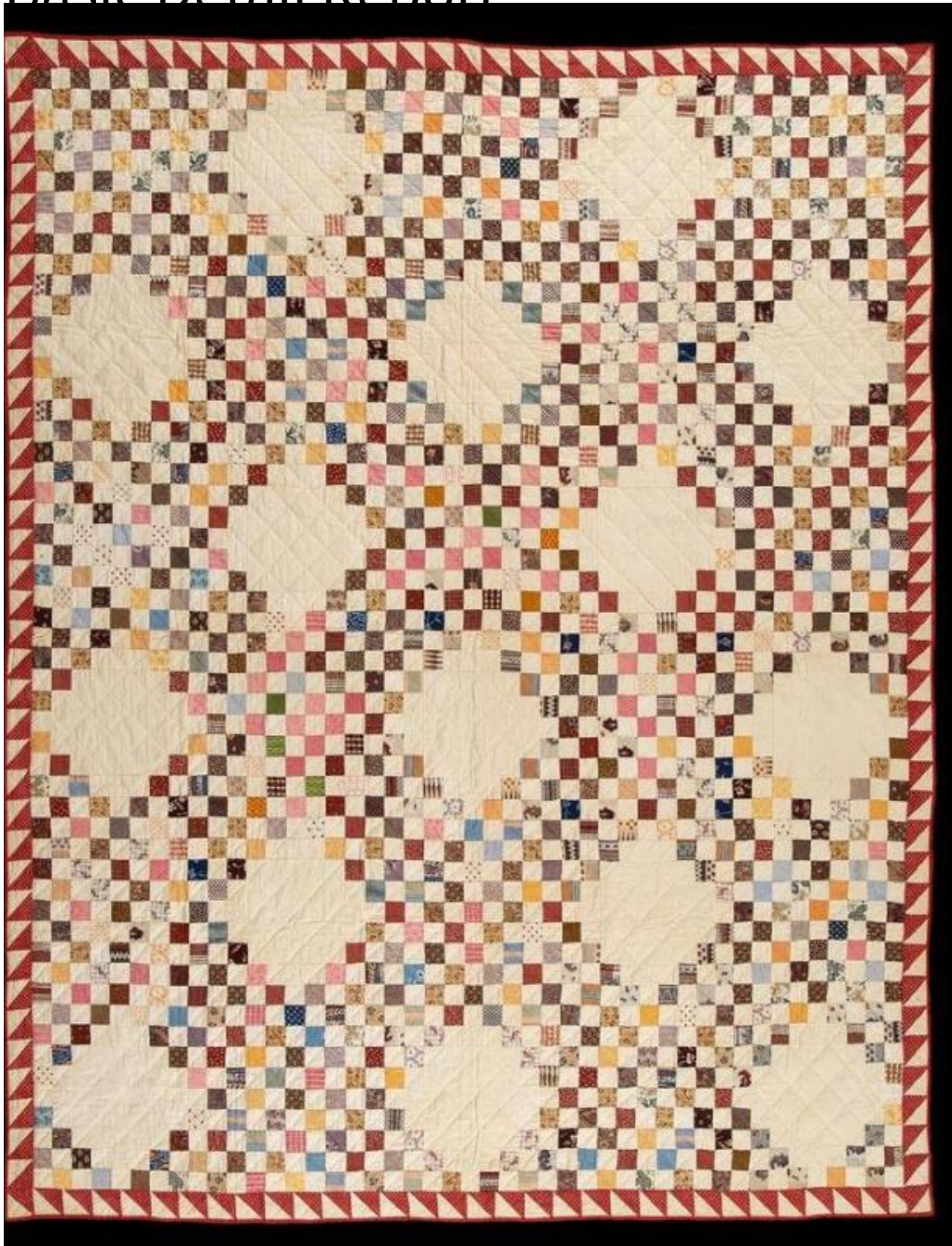


Basic Detail Report



Title Pieced Quilt

Date 1860-1880

Primary Maker Lucy Atwater

Medium Hand-stitched, plain-woven cotton

Description Pieced quilt in a Forty-Niners pattern variation. The quilt consists of a pieced top of plain-woven cotton, batting, and an undyed plain-woven cotton,

Basic Detail Report

or muslin, backing; the three layers are joined by a hand-stitched diamond grid

quilting pattern. The pieced pattern consists of fifteen blocks of square white

cotton lined up in diagonal rows across the quilt; between the large white blocks

are rows of small printed squares separated by small white squares. The printed

fabrics are in a variety of colors and patterns. This design is surrounded by a

sawtooth border of red printed triangular pieces. The binding at all four edges of

the quilt is red cotton fabric that is cut on the bias. Condition: Small, light brown

spots are scattered across the top of the quilt. The backing has minor staining

and wear at the edges.

Dimensions Primary Dimensions (length x width): 92 x 87 1/2in. (233.7 x 222.3cm)