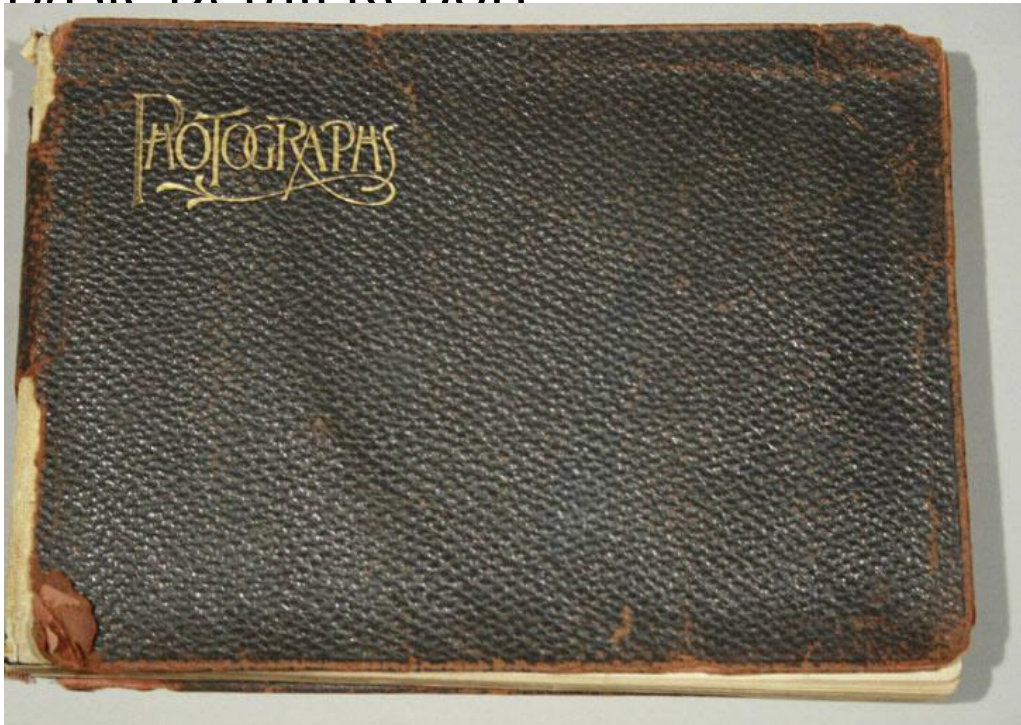


# Basic Detail Report



## Title Dwight Slate Machine Company Machines

Date about 1905

Primary Maker Unknown

Medium Photography; gelatin silver prints and cyanotypes mounted on paper bound in album with leather-covered boards

Description Photographs depict machines manufactured by the Dwight Slate Machine Company, 262 Main Street, Hartford. These presumably include drills, automatic geer cutters, automatic pinion cutters, milling machines, and bench lathes, products which are featured in an display advertisement in the 1895 Hartford City Directory.

Dimensions Primary Dimensions (image height x width): 7 x 5in. (17.8 x 12.7cm) or smaller Sheet (height x width): 7 x 5in. (17.8 x 12.7cm) or smaller Other (page height x width x depth): 9 7/8 x 7in. (25.1 x 17.8cm) Other (album height x width x depth): 10 x 7 1/8 x 1 1/4in. (25.4 x 18.1 x 3.2cm)