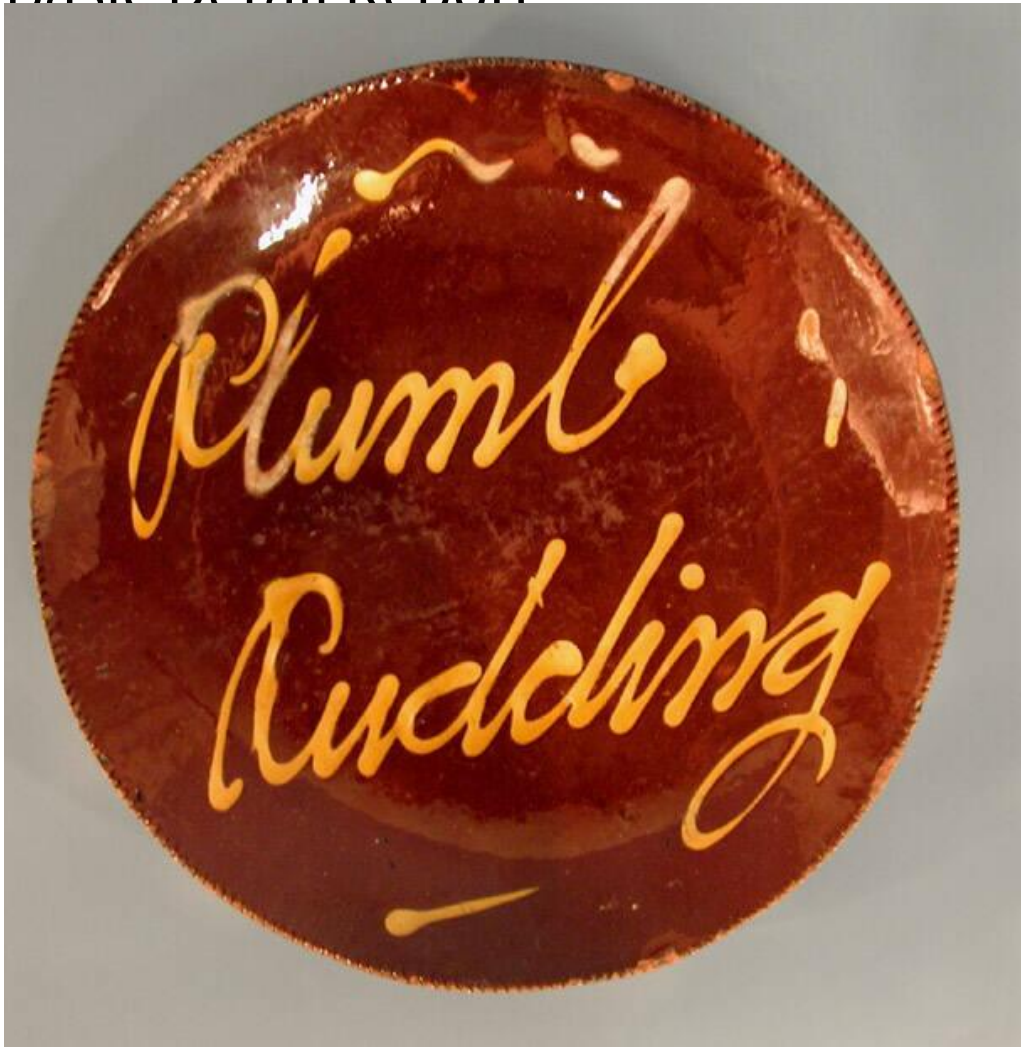


# Basic Detail Report



## Title Plate

Date about 1830-1850

Primary Maker Smith Pottery

Medium Drape-molded redware with slip decoration and a lead glaze

Description Round redware plate with slip decoration beneath a clear lead glaze. The plate was formed by trailing white slip over the clay to form a short undulating line, then the words, "Plumb/ Pudding", over a short line. Then, the clay was draped over a rounded mold to give it its shape, before tooling the edge with a roulette wheel. The top surface of the plate is glazed, which gives the white slip a yellow appearance; the bottom is left unglazed. There is relatively

# Basic Detail Report

minor wear to the glaze in the center of the plate. The slip decoration and glaze

have flaked off portions of the top "P", "l", and "b", as well as the short lines and

dots of slip decoration above and to the right. These are now dusted with an

unknown white, powdery substance. There are about a dozen chips of various

sizes in the rim.

Dimensions Primary Dimensions (diameter): 13in. (33cm)