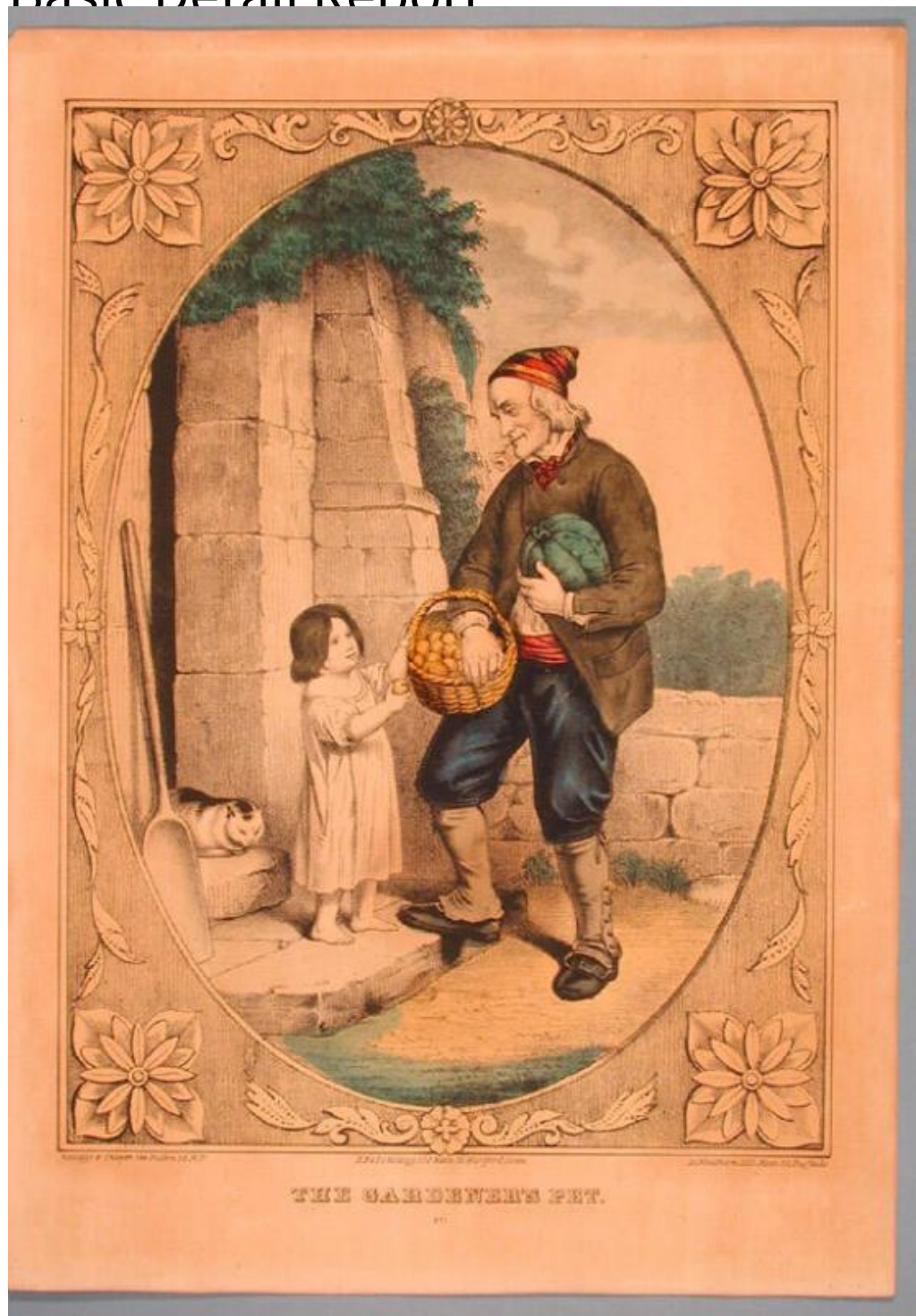


Basic Detail Report



Title The Gardener's Pet.

Date 1845-1846

Primary Maker E.B. & E.C. Kellogg

Medium Lithography; printer's ink and watercolor on wove paper

Basic Detail Report

Description An old man stands at the right. He wears a coat, breeches, a shirt, a necktie, a sash, and buckled shoes with spats. A stocking cap is on his head. He holds a small flower in his mouth. He holds a watermelon in the crook of his left arm and a wicker basket of fruit, probably apples or peaches, on his right arm. A small barefoot child wearing a pinafore over a dress reaches up to take a piece of fruit. She stands on the stone step of a building constructed of large blocks of stone. A cat lies in the doorway, and a wooden shovel rests beside the door. Foliage, presumably vines, grows on the walls of the building. A stone wall and trees are in the background. The composition is surrounded by an oval frame, with stylized designs of flowers and leaves in the borders.

Dimensions Primary Dimensions (image height x width): 11 5/8 x 8 9/16in. (29.5 x 21.7cm) Sheet (height x width): 14 3/16 x 10in. (36 x 25.4cm)