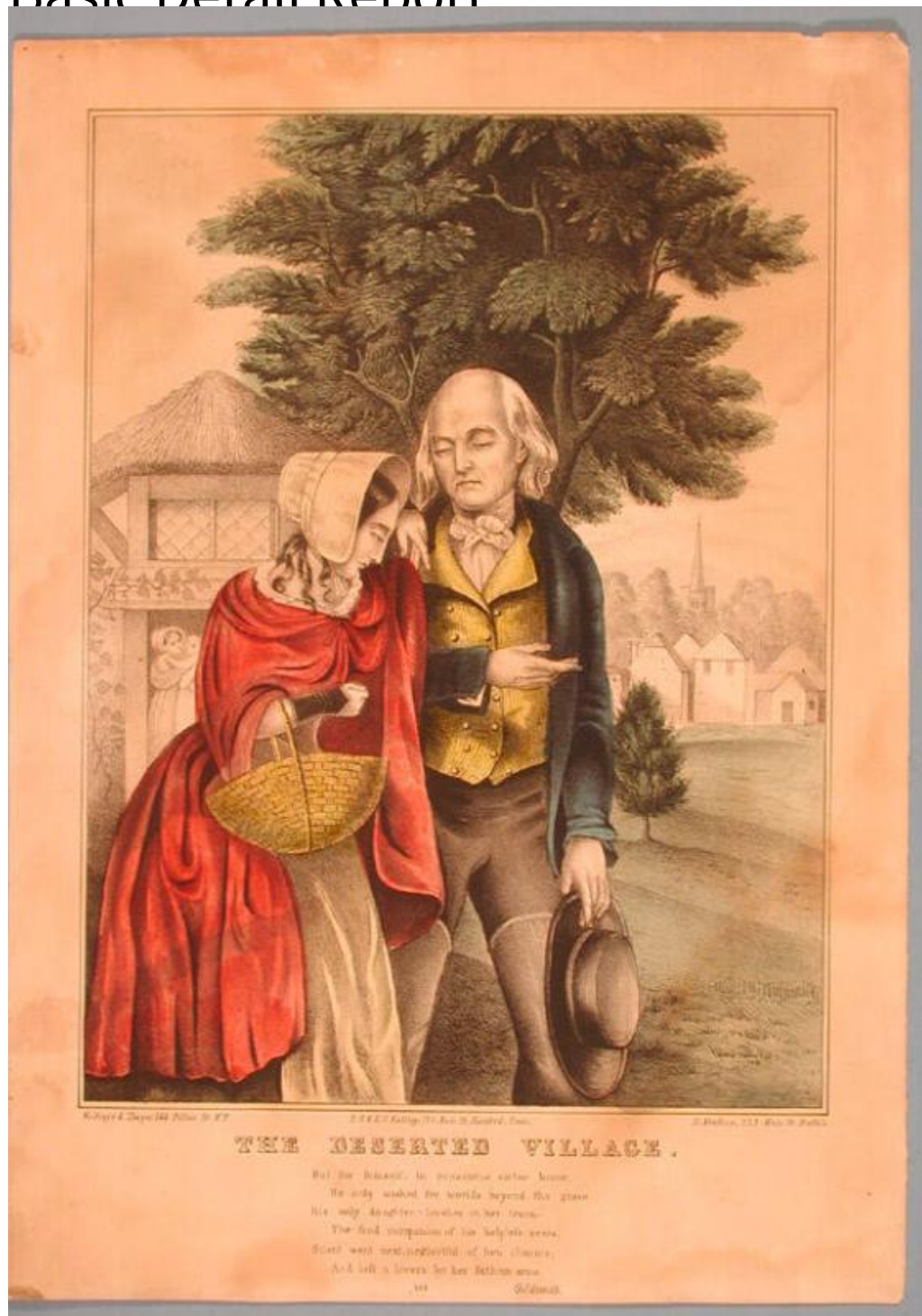


Basic Detail Report



Title The Deserted Village.

Date 1845-1846

Primary Maker E.B. & E.C. Kellogg

Medium Lithography; printer's ink and watercolor on wove paper

Basic Detail Report

Description A young woman stands beside an elderly man. She wears a dress, a cape trimmed with lace, and a bonnet. She carries a basket on her right arm and has a fingerless glove on her right wrist. Her left hand rests on the man's right shoulder. He wears a coat, pants, and a double-breasted vest with a broad collar over a shirt and necktie. In his left hand, he holds a broad-brimmed hat. In the left background, a woman holding an infant stands in the entrance to a building with a thatched roof and diamond panes in the upper windows. Ivy grows on the wall at the far left. A large tree is in the center background. The stone buildings of a village are in the right background. A church steeple is visible above the trees.

Dimensions Primary Dimensions (image height x width): 11 1/16 x 8 1/4in. (28.1 x 21cm) Sheet (height x width): 14 x 9 15/16in. (35.6 x 25.2cm)