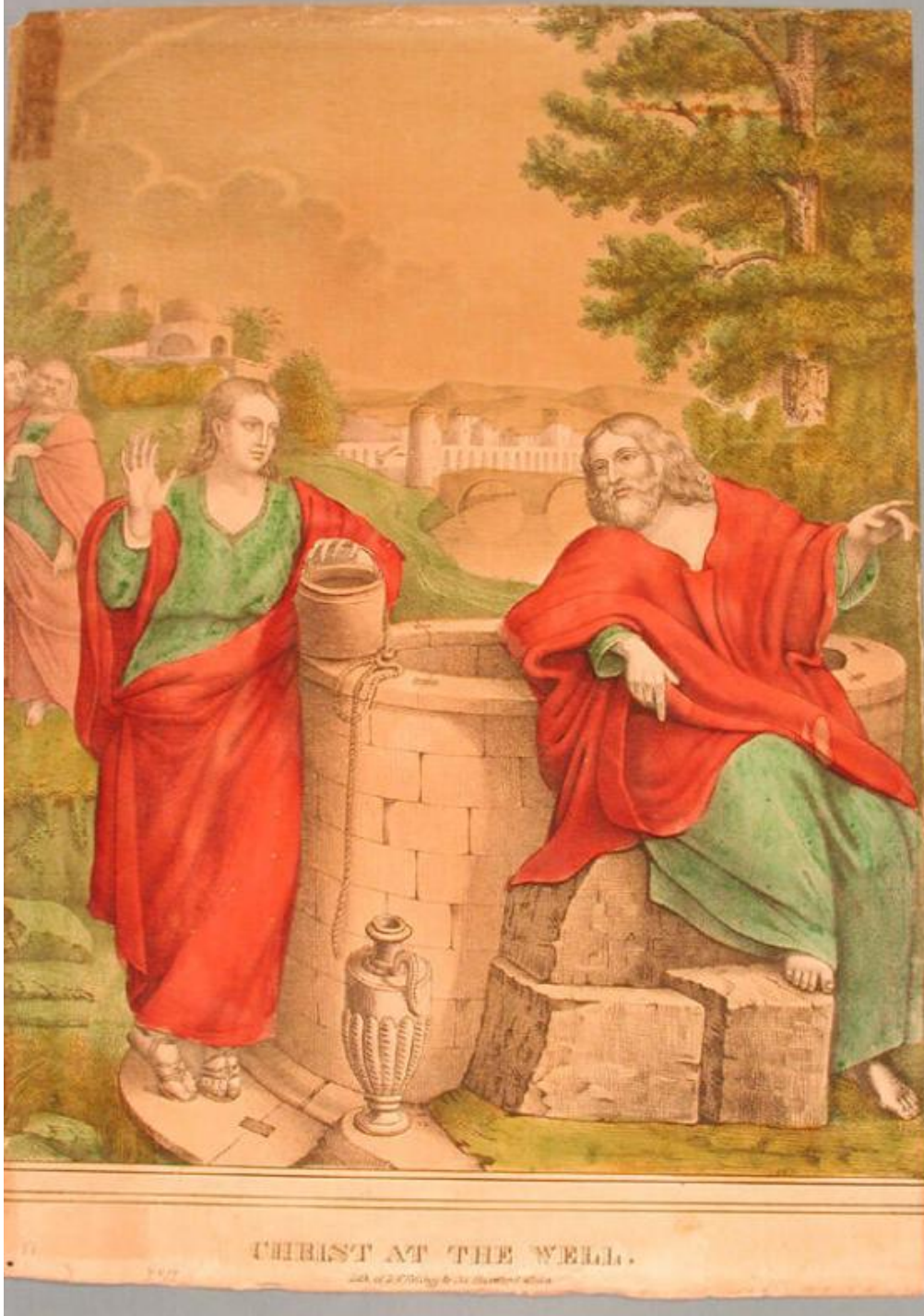


Basic Detail Report



Title Christ at the Well.

Date 1830-1840

Primary Maker D. W. Kellogg & Co.

Medium Lithography; printer's ink and watercolor on wove paper

Basic Detail Report

Description At the right, a man with a beard and mustache is seated on blocks of stone piled beside a stone well. He wears flowing robes and a cloak and is barefoot. At the left, a woman stands beside the well. Her left hand rests on a bucket, to which a rope is attached. She wears classical clothing and has sandals on her feet. An ornate jug or ewer is on the ground nearby. Two men stand in the background watching the interaction between the man and the woman. An arched bridge and the ramparts and towers of a city are beyond. A large tree is at the left.

Dimensions Primary Dimensions (image height x width): 13 5/16 x 10 3/16in.

(33.8 x 25.9cm) Sheet (height x width): 14 1/4 x 10 3/16in. (36.2 x 25.9cm)