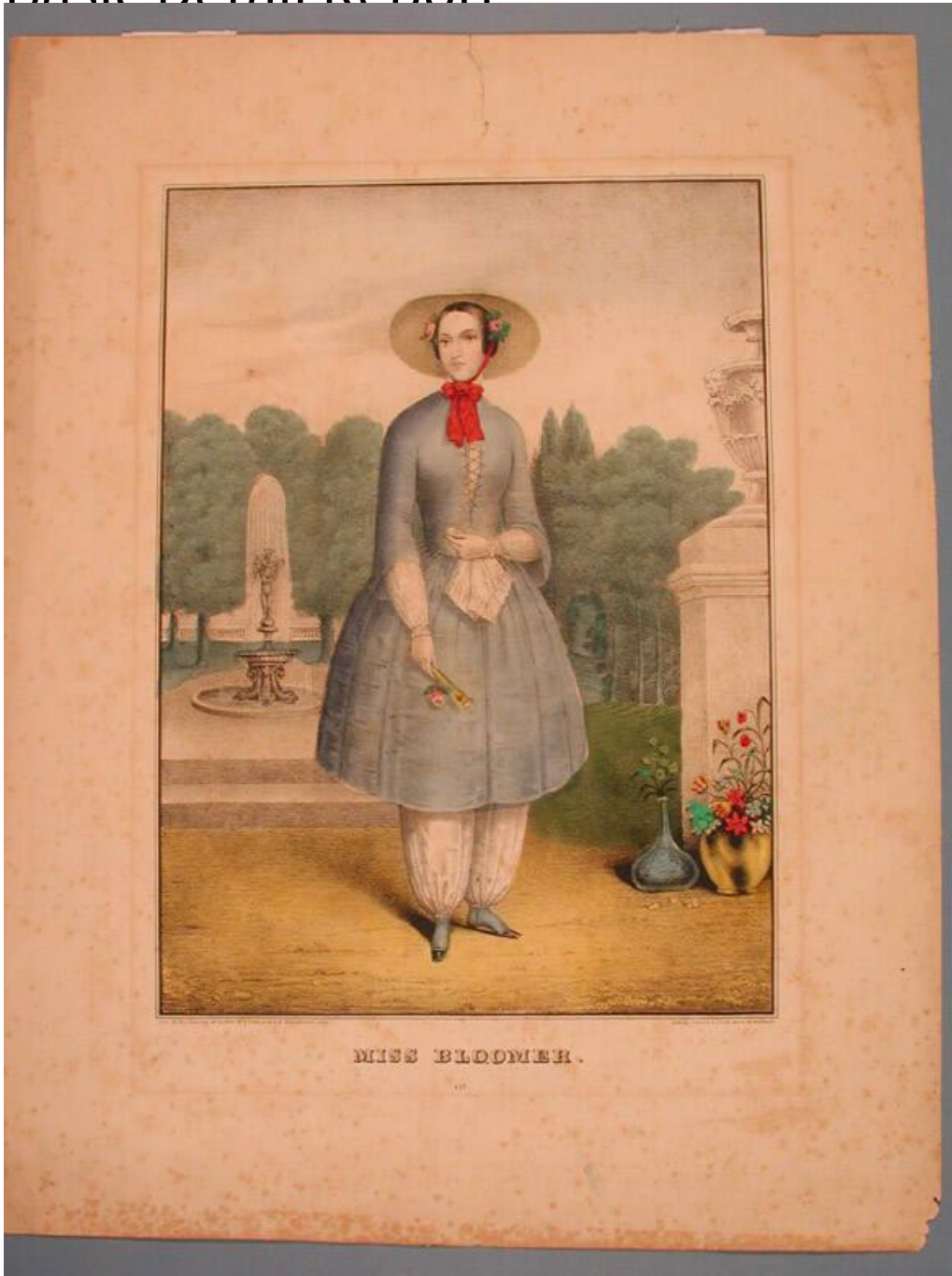


# Basic Detail Report



**Title** Miss Bloomer.

**Date** 1850-1851

**Primary Maker** Elijah Chapman Kellogg

**Medium** Lithography; printer's ink and watercolor on wove paper

**Description** A woman stands on a grassy lawn in a park or garden. She wears a short dress with a laced bodice, and pantaloons or bloomers. The sleeves of an

# Basic Detail Report

undergarment, possibly part of the bloomer outfit, protrude from beneath the sleeves of the dress. A broad-brimmed hat trimmed with flowers is tied with a ribbon bow beneath her chin. In her right hand, she holds a closed fan and a rose. In her left hand, she holds a handkerchief. On her feet, she wears shoes with patent leather toe caps. Two vases with flowers in them are at the right, at the base of a stone pedestal surmounted by an urn. In the left background, dolphins support the basin of a fountain, incorporating a sculpture of a nude youth. Trees and a stone balustrade are beyond.

Dimensions Primary Dimensions (image height x width): 11 7/8 x 8 5/8in. (30.2 x 21.9cm) Sheet (height x width): 17 3/16 x 13 1/4in. (43.7 x 33.7cm)