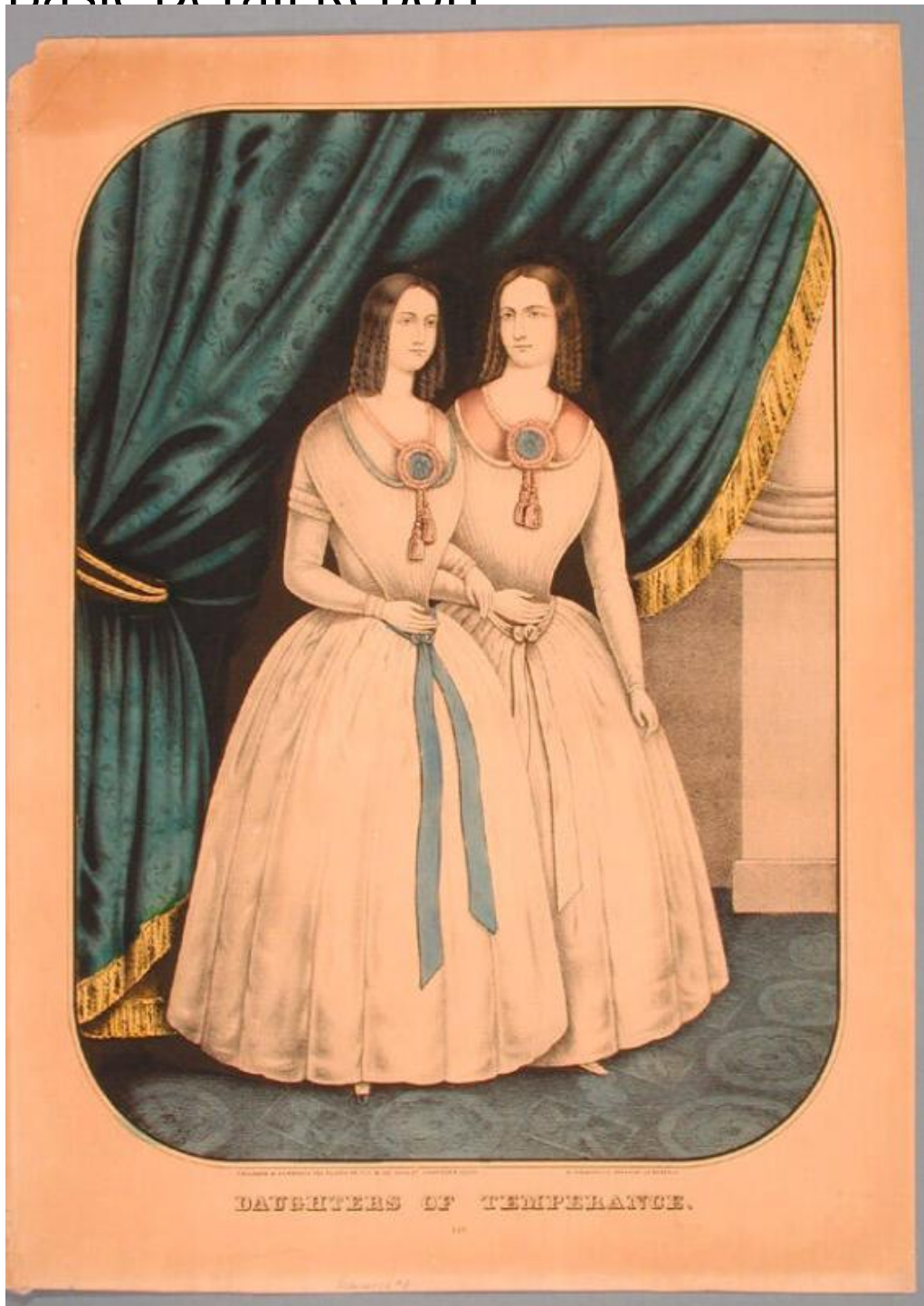


Basic Detail Report



Title Daughters of Temperance.

Date 1848-1850

Primary Maker Kelloggs & Comstock

Medium Lithography; printer's ink and watercolor on wove paper

Basic Detail Report

Description Two women stand side by side and arm in arm in the interior of a room. They are wearing similar dresses, with pleated or gathered fronts, long sleeves, and sashes. Around their necks are medallions in the shape of rosettes with tassels. Drapery trimmed with fringe is tied back at the left. The base of a column is in the right background. A patterned carpet is on the floor.

Dimensions Primary Dimensions (image height x width): 11 7/8 x 8 5/8in. (30.2 x 21.9cm) Sheet (height x width): 14 x 10in. (35.6 x 25.4cm)