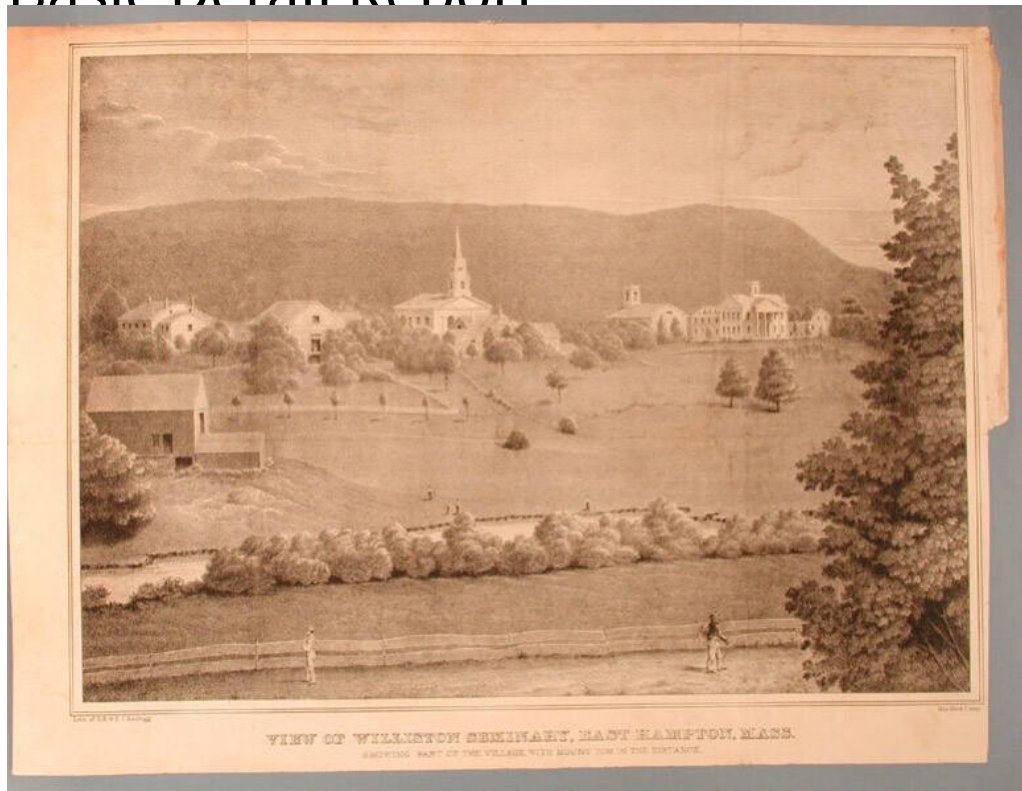


Basic Detail Report



Title View of Williston Seminary, East Hampton, Mass. Showing Part of the Village, with Mount Tom in the Distance.

Date 1840-1848

Primary Maker E.B. & E.C. Kellogg

Medium Lithography; printer's ink on wove paper

Description A church with a steeple, a smaller church or chapel with a square tower, and a large building, probably an academic building, with a portico and a cupola are on a hill in the middle distance. Other buildings on the hilltop appear to include houses and a barn. Leafy trees surround many of the buildings. Picket fences and rail fences, including a Virginia rail fence, separate fields on the slope below. Young trees are planted in a row at the left, near a large building, apparently a second barn. Four men stand in the field near the far shore of a stream. Dense bushes grow on the near side of the stream. Two men walk in

Basic Detail Report

opposite directions on a dirt road in the foreground. The man on the left has a rake on his shoulder and may be a farmer or farmhand. The man on the right carries a pack on his back and holds a walking stick. A fence, possibly a wire fence, separates the road from a narrow field beyond. The dense foliage of a large tree is at the far right. A large hill or mountain is in the background.

Dimensions Primary Dimensions (image height x width): 12 5/8 x 17 3/16in. (32.1 x 43.7cm) Sheet (height x width): 14 1/16 x 19in. (35.7 x 48.3cm)