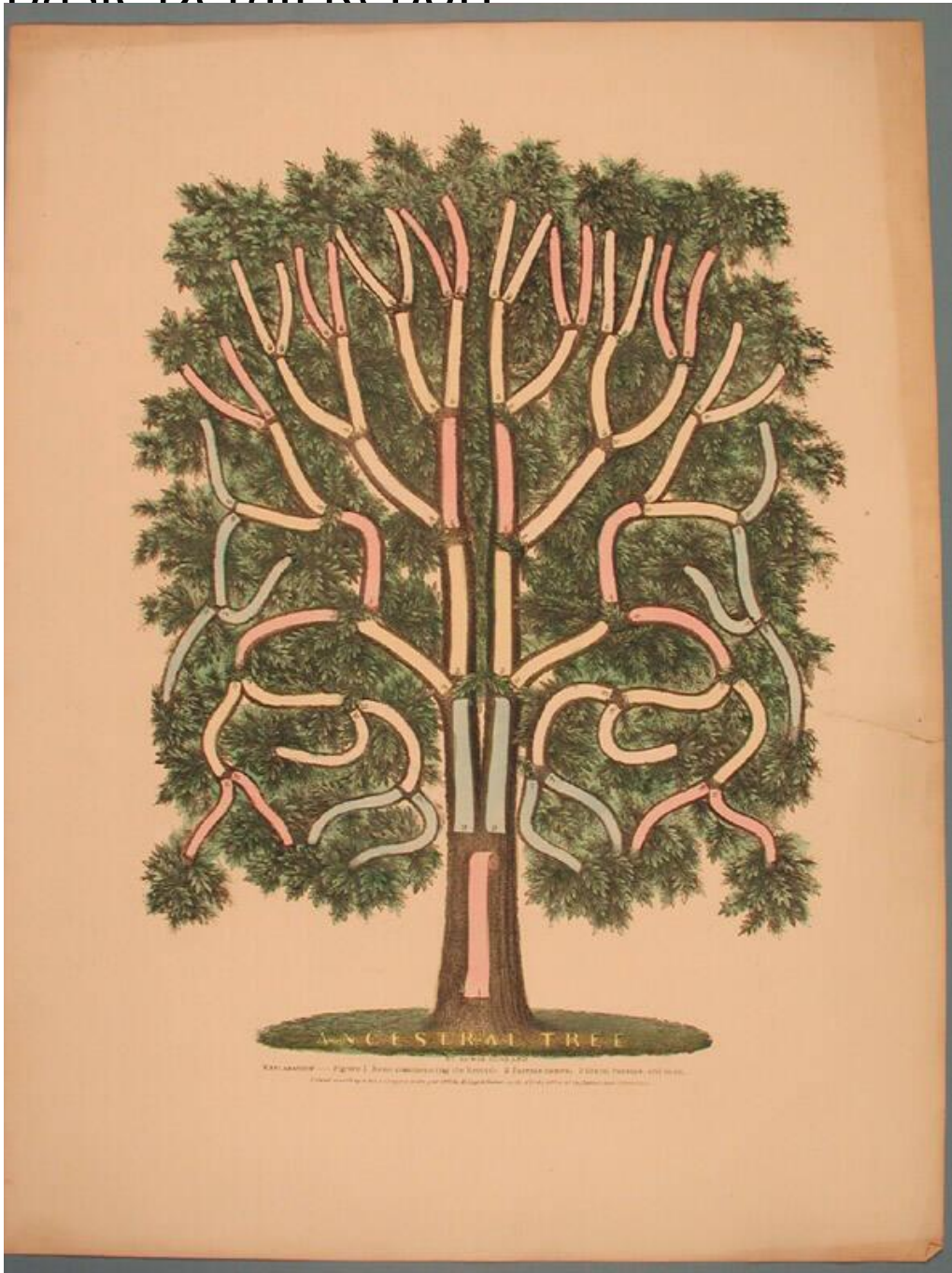


Basic Detail Report



Title Ancestral Tree.

Date 1845

Primary Maker Kellogg & Hanmer

Medium Lithography; printer's ink and watercolor on wove paper

Description Genealogical chart is in the form of an oak tree. Blank banners are provided for the names. Each banner is numbered to indicate the generation, up

Basic Detail Report

to the seventh generation. The trunk of the tree rises from a grassy base and

splits to form two main branches. The banners themselves serve as the smaller

branches. The tree is densely covered with oak leaves.

Dimensions Primary Dimensions (image height x width): 13 7/16 x 10 1/4in. (34.1

x 26cm) Sheet (height x width): 17 7/8 x 13 1/2in. (45.4 x 34.3cm)