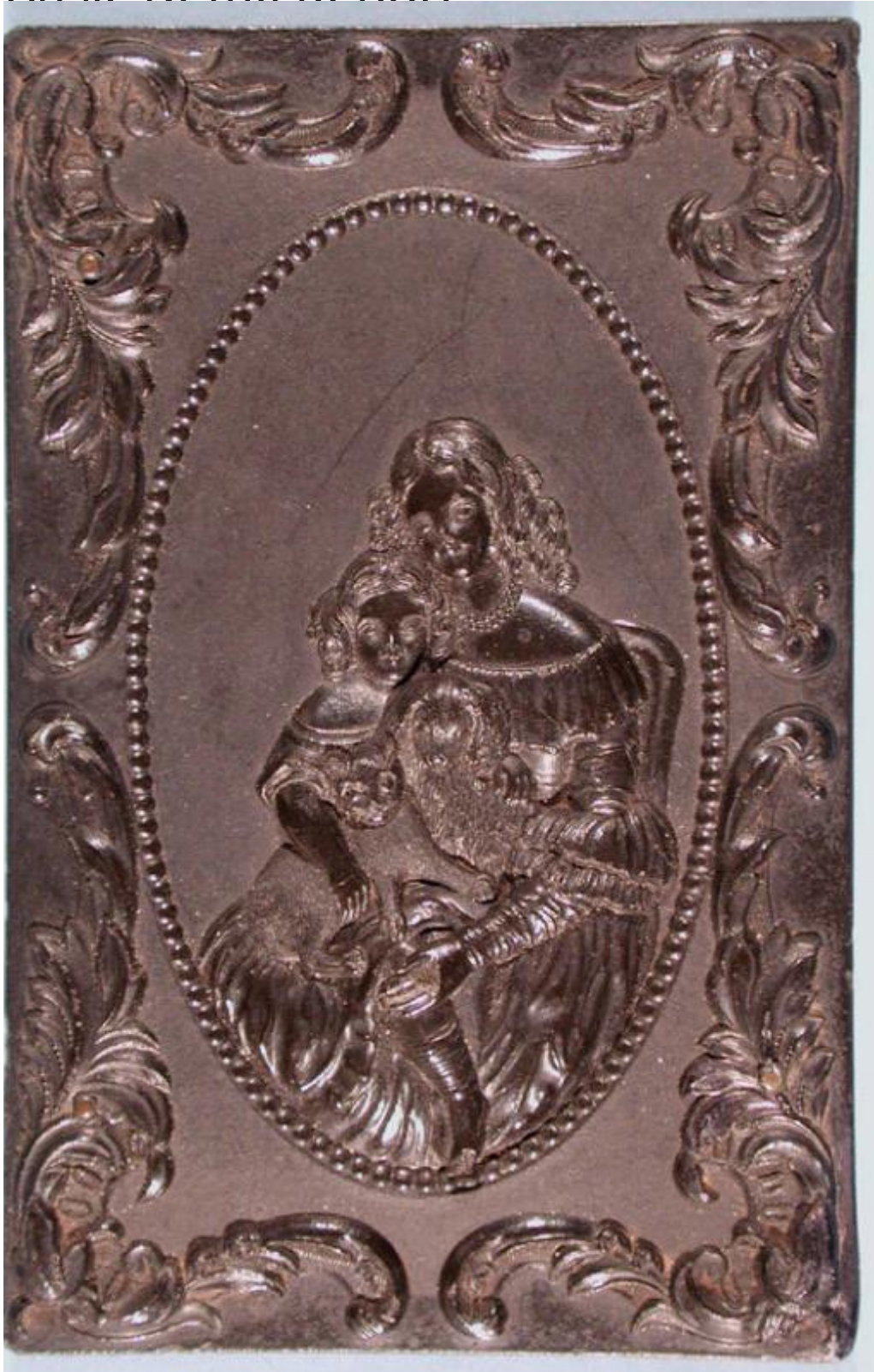


Basic Detail Report



Title Union Case with Household Pets Design

Date about 1859

Primary Maker E.B. & E.C. Kellogg

Basic Detail Report

Medium Thermoplastic case; molded plastic case containing an albumen print

and a tintype under glass, with velvet pad, brass mats, metal hinges and clasps

Description Molded plastic design on front cover: A young woman sits in a chair,

holding a young child in her lap. The child holds a dog, probably a King Charles

spaniel, and a tabby cat. Molded plastic design on back cover: An abstract

design consisting of a circle in a diamond in a rectangle in another rectangle.

Each panel has a different pattern composed of lines and cross hatching. The

deep purple velvet pad is embossed with scrollwork and stylized leaves. The

brass mats have two different patterns, each incorporating flowers and

scrollwork. The photographs are portraits of two different unidentified men.

Dimensions Primary Dimensions (case height x width x depth): 4 5/8 x 2 7/8 x 7

/8in. (11.7 x 7.3 x 2.2cm)