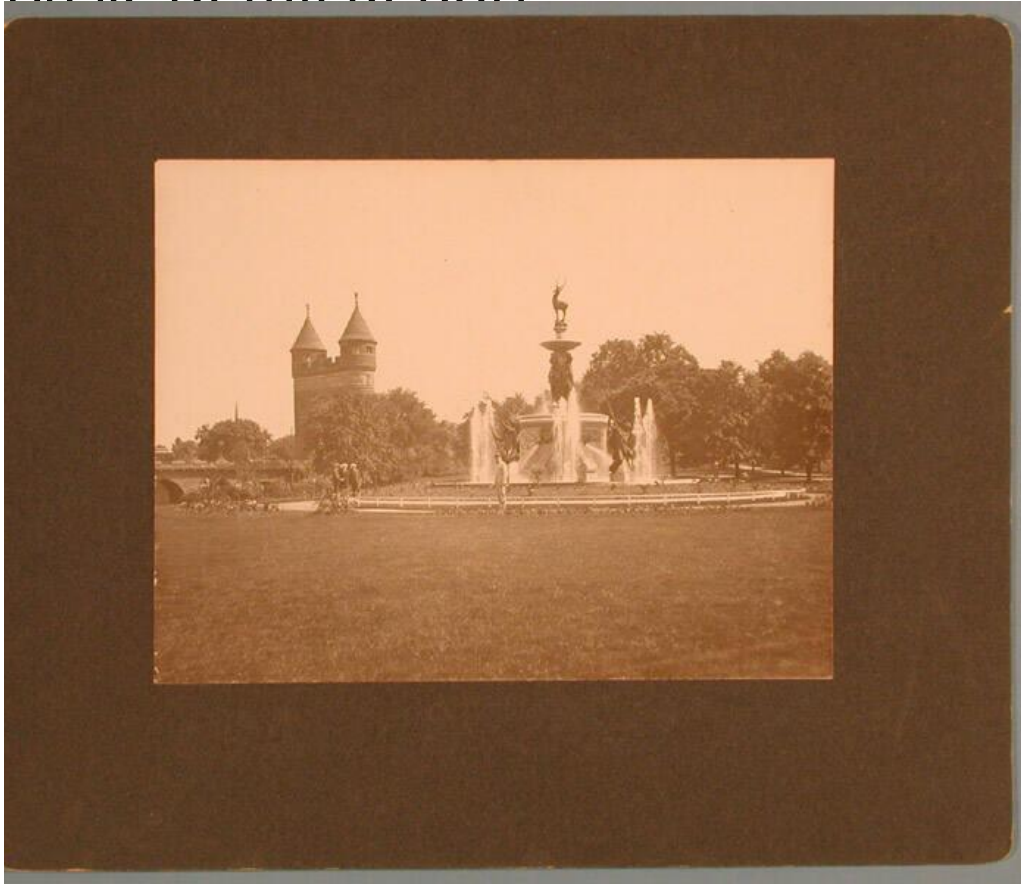


Basic Detail Report



Title Bushnell Park views

Date 1900-1915

Primary Maker Joseph Wilson

Medium Photography; albumen print on paper

Description Several views of Bushnell Park in Hartford, Connecticut. There are several open grassy lawns, with trees and bushes, and a river running alongside.

A large Gothic domed structure, the Connecticut State Capitol, can be seen, as well as a Gothic brownstone archway, the Soldiers and Sailors Memorial Arch, and a bridge over the Park River. The stepping stones in the river are visible in another image. The Corning Fountain, with it's stag, Native Americans, and flower beds, is seen from different angles. The pond, with lily pads and fountain, are shown.

Basic Detail Report

Dimensions Primary Dimensions (image height x width): 6 1/8 x 8in. (15.6 x 20.3

cm) Mount (height x width): 10 x 12in. (25.4 x 30.5cm)