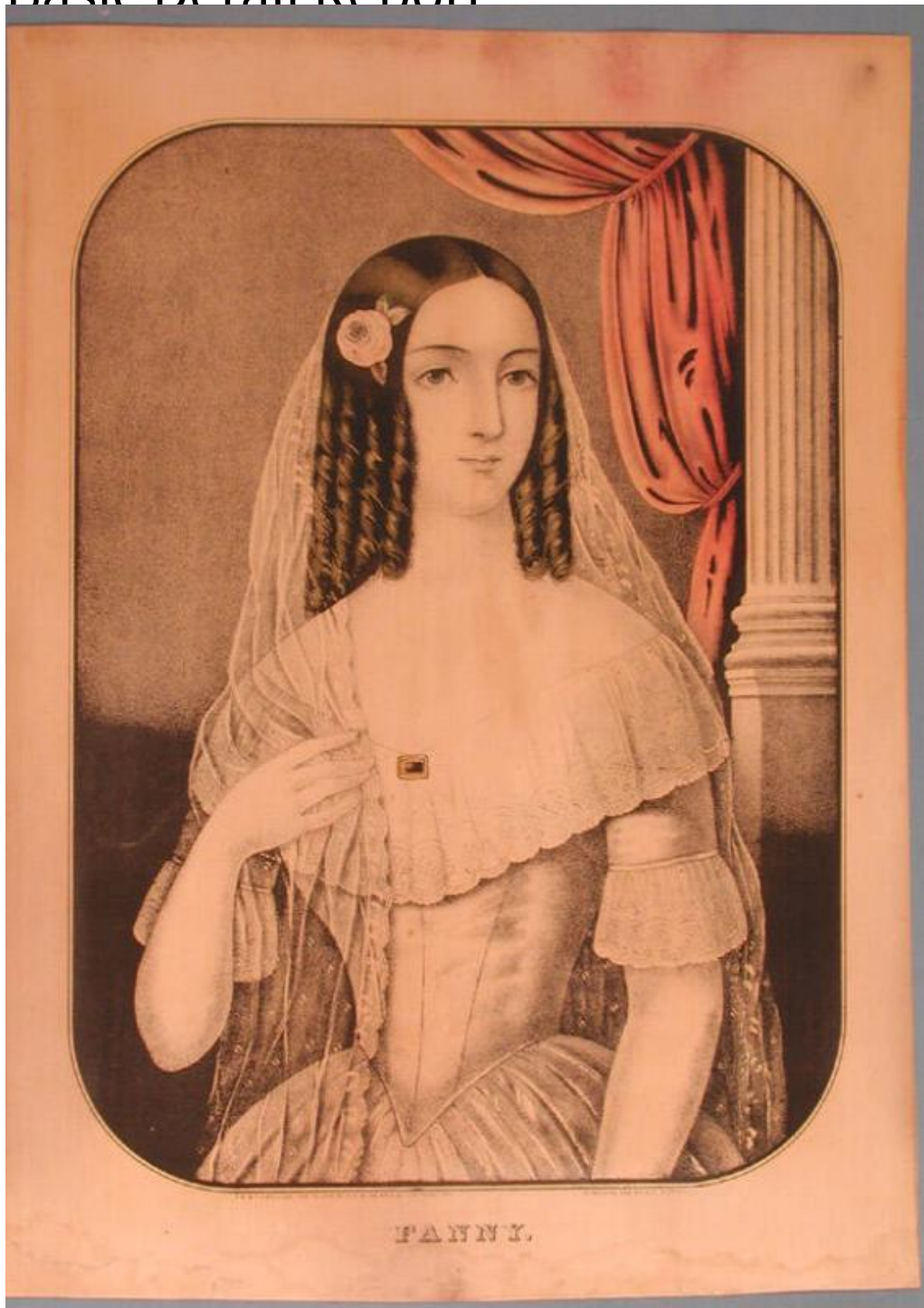


Basic Detail Report



Title Fanny.

Date 1847

Primary Maker E.B. & E.C. Kellogg

Medium Lithography; printer's ink and watercolor on wove paper

Basic Detail Report

Description Half-length portrait of a young woman standing in an interior. She

wears a dress with a V-shaped waistline and a broad lace collar and cuffs. A

small, rectangular brooch is pinned to the collar, and a rose is in her hair. A long,

sheer veil trimmed with lace is attached to the back of her head and extends

down her back and over her right shoulder. A fluted column on a high base and

drapery tied back with cords are in the right background.

Dimensions Primary Dimensions (image height x width): 11 7/8 x 8 5/8in. (30.2 x

21.9cm) Sheet (height x width): 14 1/8 x 10 1/16in. (35.9 x 25.6cm)