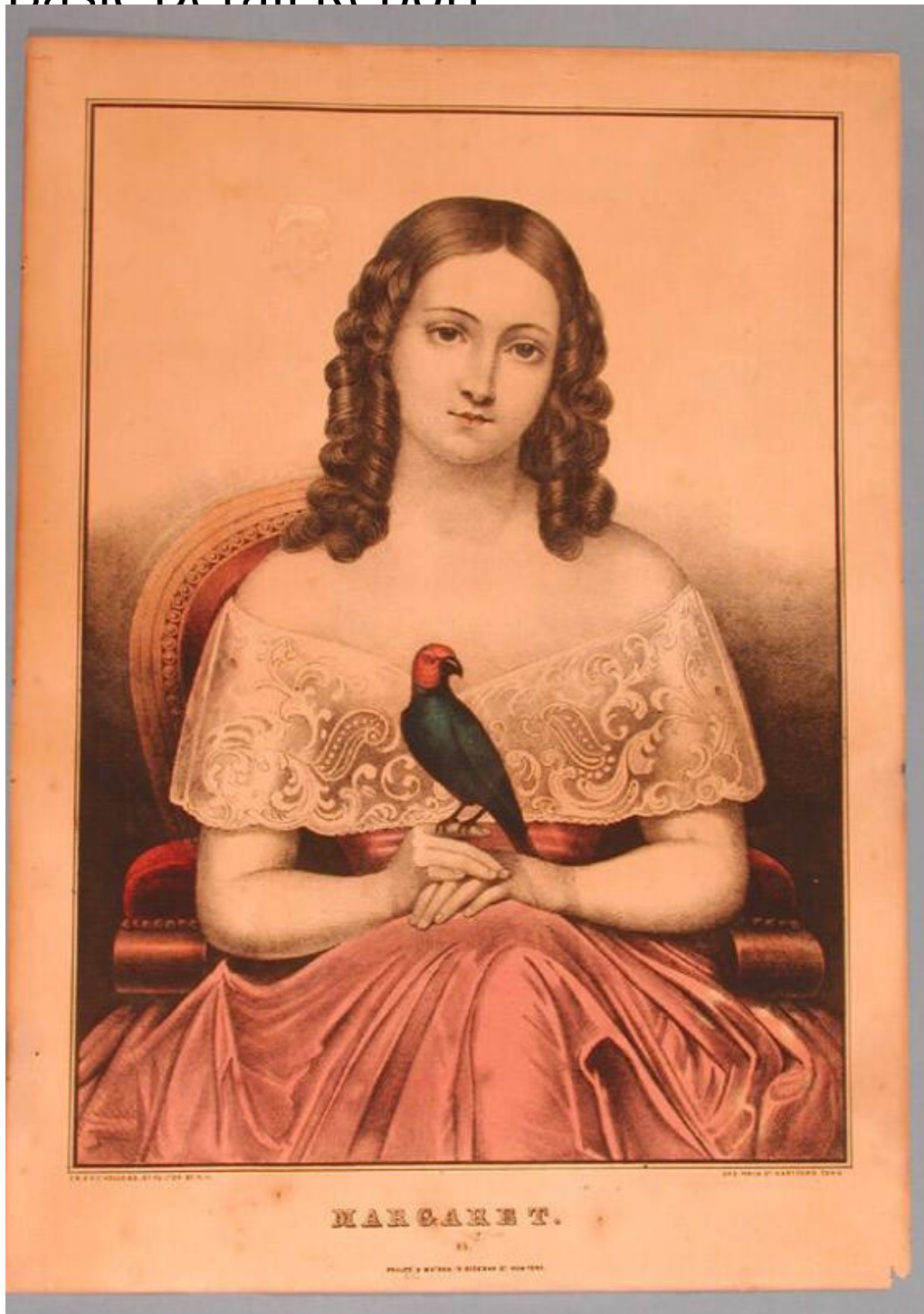


Basic Detail Report



Title Margaret.

Date 1857-1865

Primary Maker E.B. & E.C. Kellogg

Medium Lithography; printer's ink and watercolor on wove paper

Basic Detail Report

Description Three-quarter-length portrait of a girl or young woman seated in an upholstered armchair. She is wearing a dress with a large lace collar or bertha.

Her hands are folded in her lap, and a small parrot sits on the index finger of her right hand. Her legs appear to be crossed beneath her full skirt.

Dimensions Primary Dimensions (image height x width): 11 15/16 x 8 9/16in.

(30.3 x 21.7cm) Sheet (height x width): 13 15/16 x 9 15/16in. (35.4 x 25.2cm)