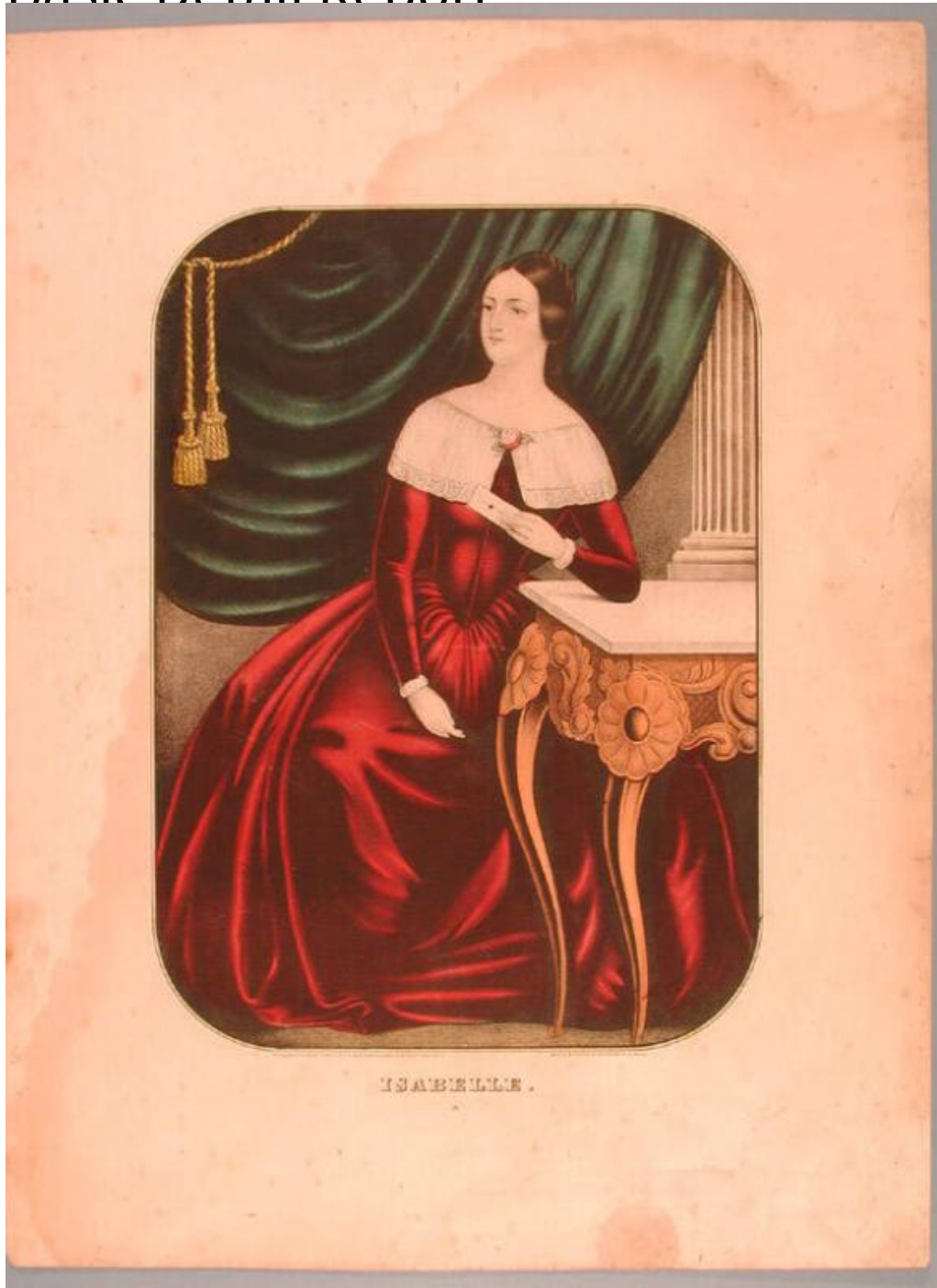


# Basic Detail Report



**Title Isabelle.**

Date 1850

Primary Maker Kellogg & Comstock

Medium Lithography; printer's ink and watercolor on wove paper

# Basic Detail Report

Description Full-length portrait of a woman seated at a table. She wears a dress with a V-shaped waistline, long sleeves, cuffs, and a wide collar or bertha trimmed with lace. A rose is pinned at her breast. She holds an envelope sealed with sealing wax. Her left elbow rests on what appears to be a marble-topped table with console legs and ornate, carved decoration. Drapery with cords and tassels is behind her at the left. A fluted column is in the right background.

Dimensions Primary Dimensions (image height x width): 11 3/4 x 8 1/2in. (29.8 x 21.6cm) Sheet (height x width): 17 5/8 x 13 1/8in. (44.8 x 33.3cm)