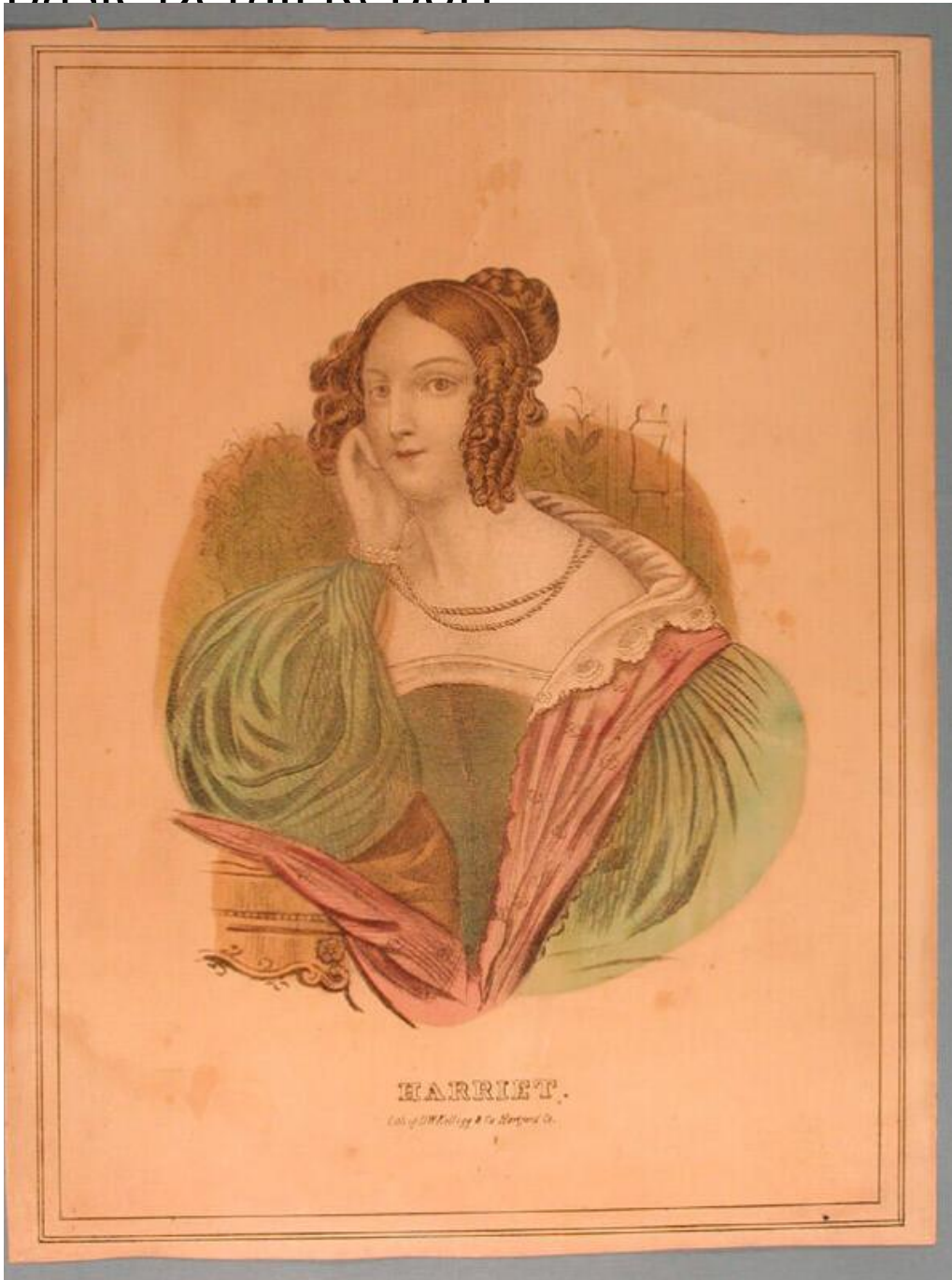


# Basic Detail Report



**Title Harriet.**

Date 1830-1840

Primary Maker D. W. Kellogg & Co.

Medium Lithography; printer's ink and watercolor on wove paper

Description Half-length, seated portrait of a young woman. She wears a dress with balloon sleeves trimmed with lace and a floral printed shawl. A two-strand

# Basic Detail Report

necklace is around her neck. She leans her right elbow on a table and leans her cheek on her right hand. Floral patterned wallpaper is on the wall in the background.

Dimensions Primary Dimensions (image height x width): 7 3/8 x 6in. (18.7 x 15.2 cm) Sheet (height x width): 11 7/8 x 9 1/16in. (30.2 x 23cm)