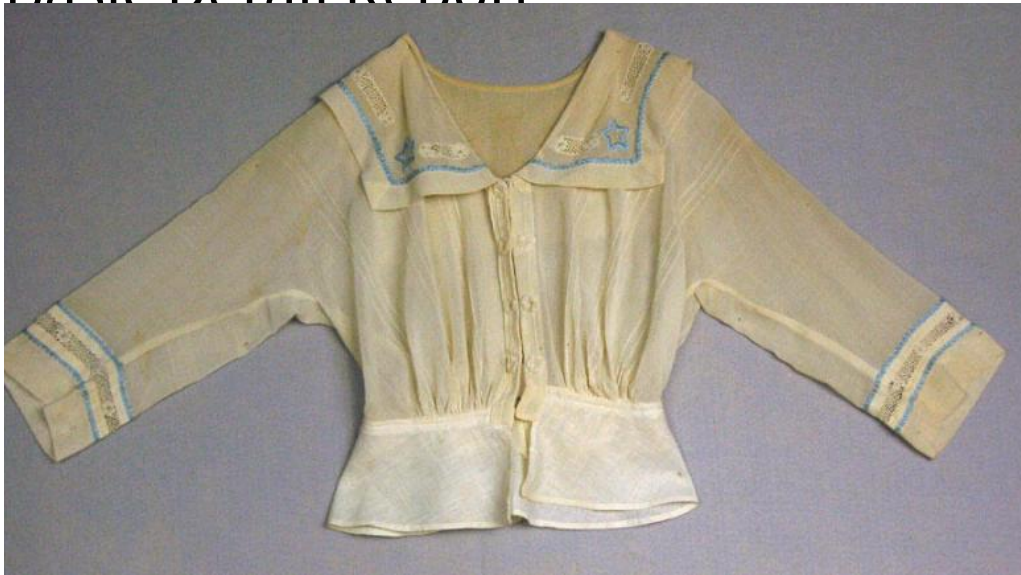


Basic Detail Report



Title Shirtwaist

Date 1915-1920

Primary Maker Unknown

Medium Cotton

Description White, cotton shirtwaist with center front closure, 3/4 sleeves, large sailor collar, crochet, embroidery, and tucks. Large sailor collar has blue, chain-stitch embroidery decorating the edge along with blue embroidered stars in the corners with diamonds on the shoulders and center back. A crochet inset alternates with the blue embroidered stars and diamonds. The cuffs have a row of crochet surrounded by blue, chain-stitch embroidery. Small vertical tucks run from the bottom front of the shirtwaist to the bottom back. There are nine tucks on either side of the center front closure. The center front closure has four pairs of 3-D crocheted flowers decorating the hook and eye closure.