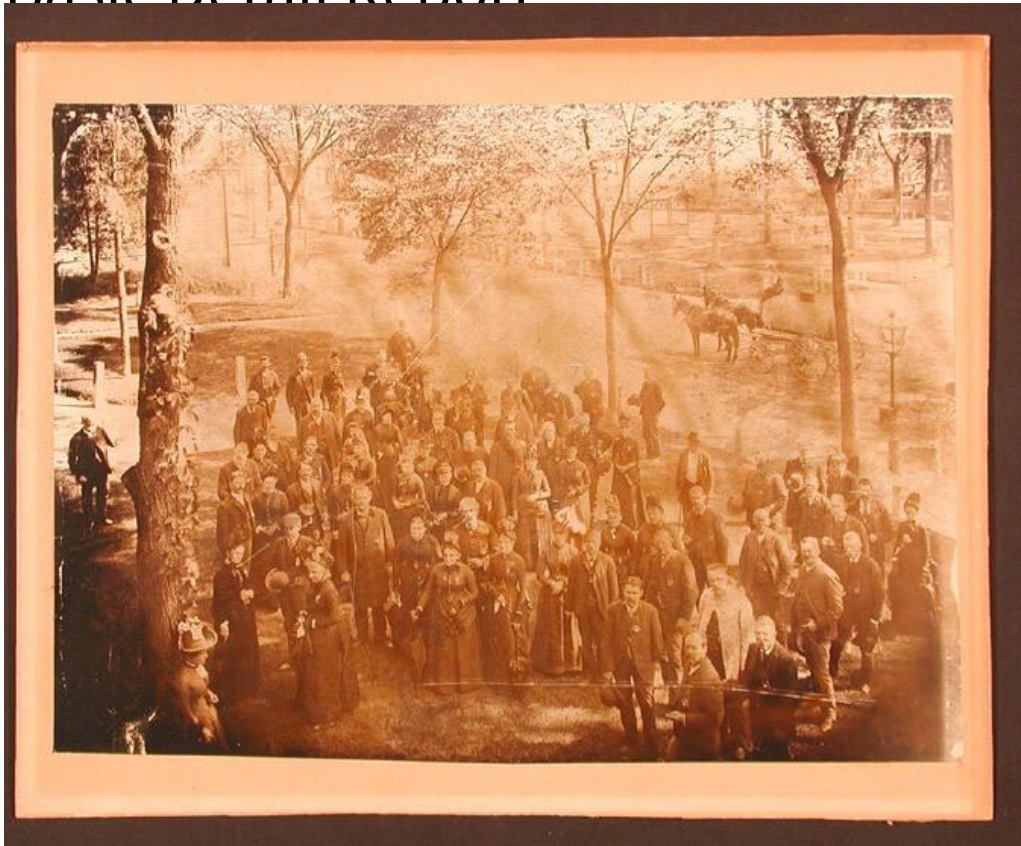


Basic Detail Report



Title Group of Men and Women, Deep River or Chester

Date about 1880

Primary Maker Unknown

Medium Photography; albumen print on paper

Description A large group of men and women stands on a grassy lawn, possibly a town green. The women wear dresses and elaborate hats; many hold parasols or umbrellas. The men wear jackets, trousers, and shirts. Most men hold their hats in their hands. Both men and women wear circular badges shaped like small flasks or canteens. These appear to be attached to chains of differing lengths and hang from buttons. Regularly spaced young trees grow on the lawn. In the left background, near a lamppost, two horses drawn a wagon holding a tank, presumably a water tank, probably used to reduce the dust on the dirt road.

Basic Detail Report

Dimensions Primary Dimensions (image height x width): $6 \frac{3}{4} \times 9 \frac{7}{16}$ in. (17.1 x 24cm) Sheet (height x width): $6 \frac{3}{4} \times 9 \frac{7}{16}$ in. (17.1 x 24cm) Mount (height x width): $8 \frac{1}{16} \times 10 \frac{1}{16}$ in. (20.5 x 25.6cm)