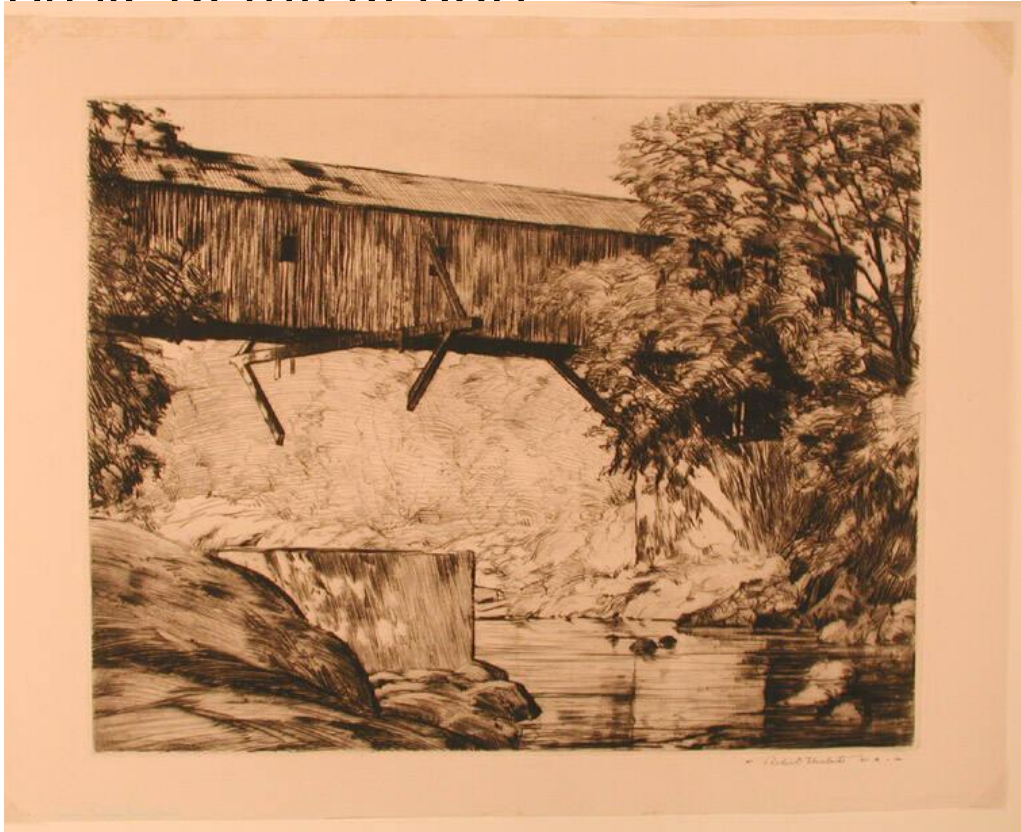


Basic Detail Report



Title Bull's Bridge

Date 1940

Primary Maker Robert Nisbet

Medium Drypoint on wove paper

Description A covered bridge spans a gorge above a shallow river. Rocks are in the stream and on each bank. A large abutment is at the right. A second stone or masonry structure, possibly part of an earlier bridge or dam, is at the left. Trees are at the left and right and in the background.

Dimensions Primary Dimensions (image height x width): 10 3/4 x 13 3/4in. (27.3 x 34.9cm) Platemark (height x width): 10 7/8 x 13 7/8in. (27.6 x 35.2cm) Sheet (height x width): 13 3/8 x 17in. (34 x 43.2cm)