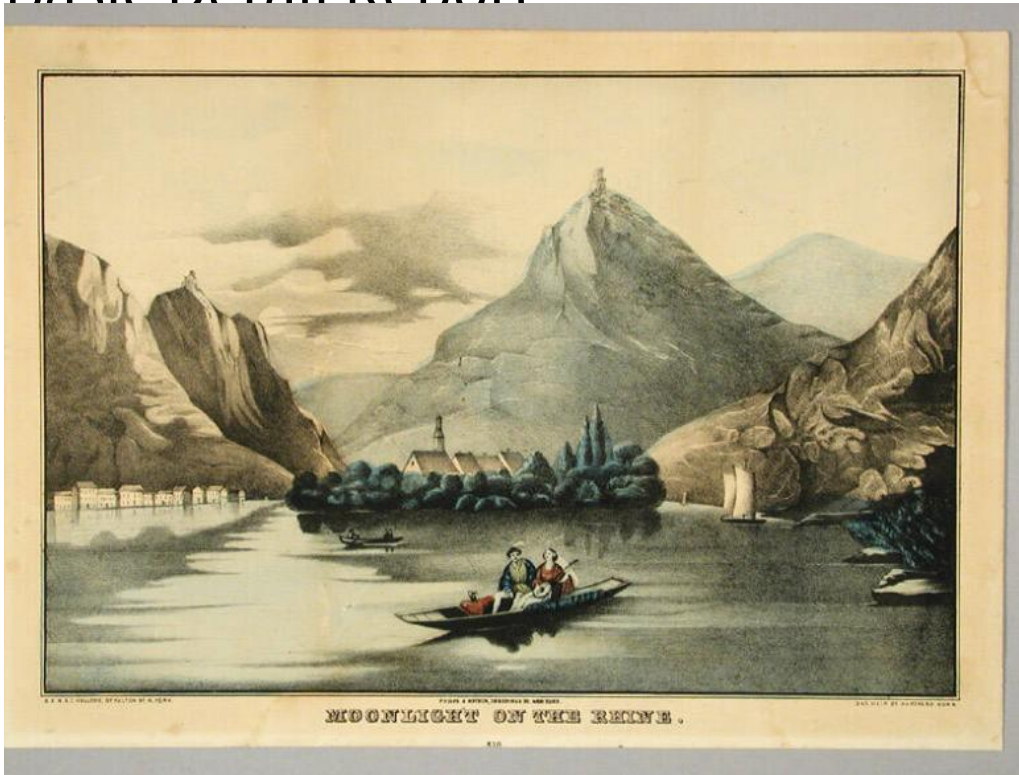


Basic Detail Report



Title Moonlight on the Rhine.

Date 1857-1865

Primary Maker E.B. & E.C. Kellogg

Medium Lithography; printer's ink and watercolor on wove paper

Description A man and a woman are seated in a small flat-bottomed boat drifting on a broad river. The woman is playing a lute. The man wears a hat with a feather and what appears to be a doublet and hose. A small pitcher or jug is near the edge of the boat. Three people are in a rowboat in the background. Two small sailboats are in the right background. Steep rocky cliffs line the river on both sides. A row of buildings line the river bank at left. Another group of buildings, including what appears to be a church with a steeple, are on a

Basic Detail Report

wooded island in the middle of the river. Castles are on top of a crag at the left, and a tall peak is in the center background. The moon is visible through clouds in the sky at the left.

Dimensions Primary Dimensions (image height x width): 8 11/16 x 12 3/4in. (22.1 x 32.4cm) Sheet (height x width): 10 x 14in. (25.4 x 35.6cm)