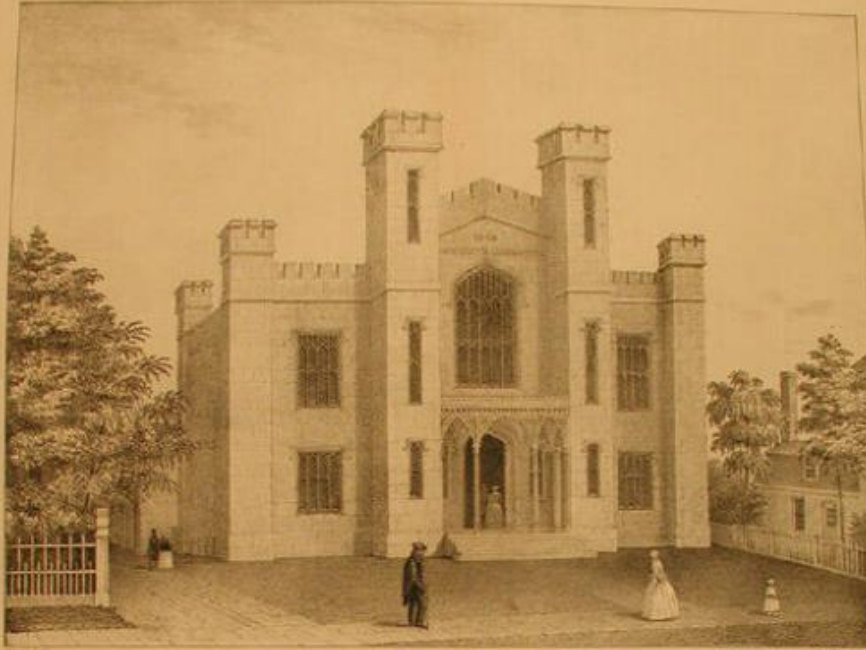


Basic Detail Report



WADSWORTH ATHENEUM.
Hartford, Conn.

GALLERY OF PAINTINGS IN WADSWORTH ATHENEUM.

The collection in this gallery, comprises upwards of
ONE HUNDRED OIL PAINTINGS:

many of them by the first masters, ancient and modern: including Trumbull's Battles of Bunker hill, Trenton, Princeton, and the attack on Quebec, and the Declaration of Independence, each 9 feet by 6. Sir Thomas Lawrence's splendid full length portrait of Benjamin West, View of Mount Etna, taken from Taormina Sicily, by Thomas Cole, 10 feet by 7. L. Terry's celebrated painting of Christ disputing with the doctors, 12 feet by 9. Whichelo's destruction of Jerusalem, 22 feet by 14; also, paintings by Rubens, Murillo, Llorente, Spagnoletto, Poussin, Vernet, Raeburn and others, embracing portraits of distinguished individuals, Landscapes, Sea views, Historical pieces, &c. forming altogether a most attractive and splendid collection of paintings, worthy the attention of the lovers of the fine arts, and the public generally.

HARTFORD, 1847.

Title Wadsworth Atheneum, Hartford, Conn.

Date 1847

Primary Maker Henry Austin

Medium Lithography and letterpress printing; printer's ink on wove paper

Basic Detail Report

Description View of the Wadsworth Atheneum, a stone Gothic revival museum

building with square towers flanking the main entrance, which is recessed behind flattened pointed arches. Windows appear to contain leaded glass and have hood molds with corbel stops. Crenellations line the roof. Lettering in the gable over the front entrance reads: "1842 / WADSWORTH ATHENEUM". A man and a woman stand within the porch. Another man and woman are walking on the dirt road to the left of the museum. A man, woman, and a small girl are walking on what appears to be a paved sidewalk in front of the museum. This man wears a cap and cloak and is leaning on a cane. A grassy lawn is in front of the museum. Trees and an iron fence are at the left. Trees, a picket fence, and a house are at the right. A lengthy letterpress text (see Inscriptions) is printed beneath the image.

Dimensions Primary Dimensions (image height x width): 8 7/16 x 11in. (21.4 x 27.9 cm) Sheet (height x width): 17 15/16 x 12 13/16in. (45.6 x 32.5cm)