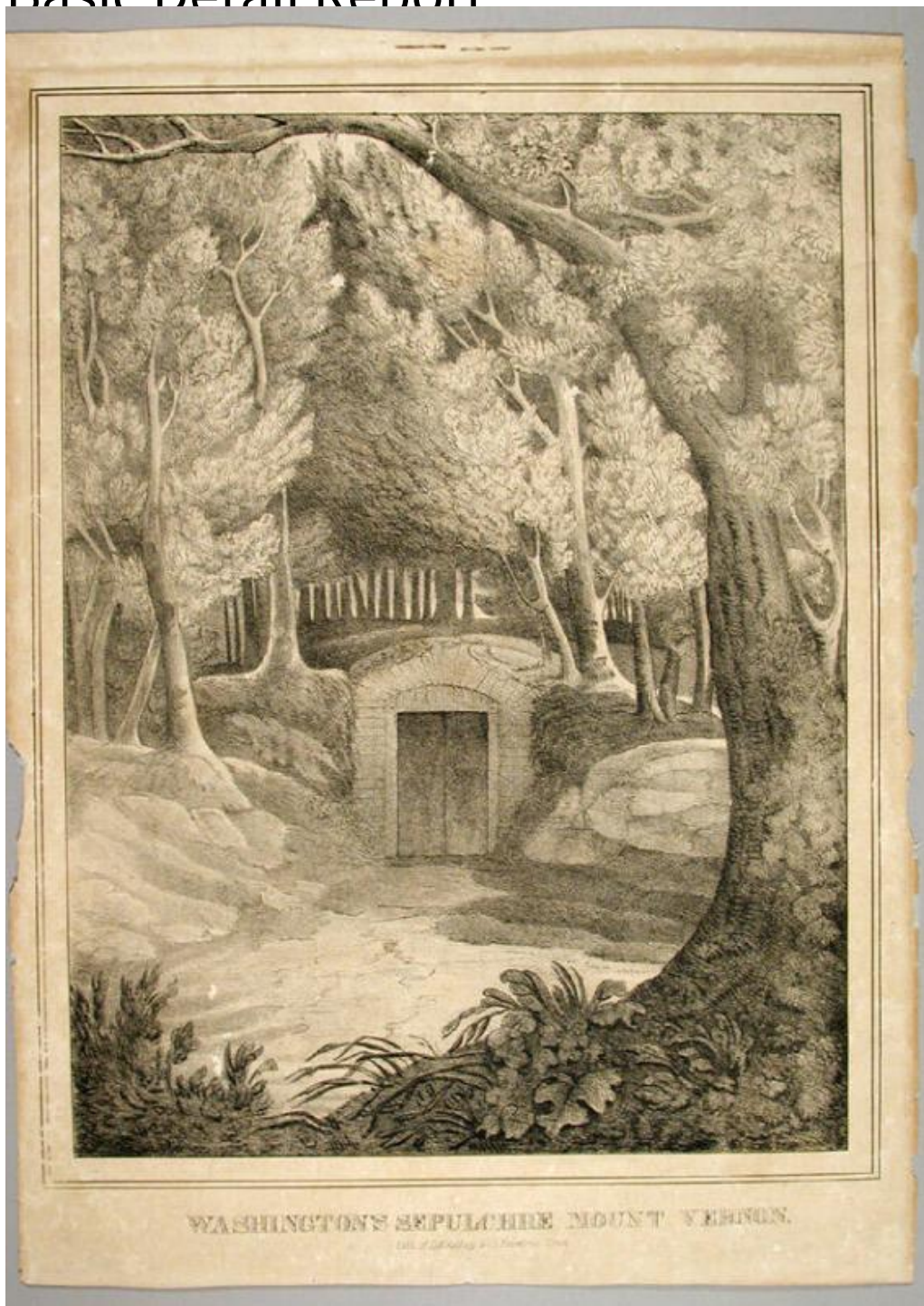


Basic Detail Report



Title Washington's Sepulchre Mount Vernon.

Date 1830-1840

Primary Maker D. W. Kellogg & Co.

Medium Lithography; printer's ink on wove paper

Basic Detail Report

Description An underground burial vault with double doors, apparently built of stone, is surrounded by large trees. Banks slope down to an open area in front of the tomb. A single large tree frames the composition at the right. Plants and weeds are in the foreground.

Dimensions Primary Dimensions (image height x width): 13 1/2 x 10 3/8in. (34.3 x 26.4cm) Sheet (height x width): 15 1/2 x 11 1/8in. (39.4 x 28.3cm)