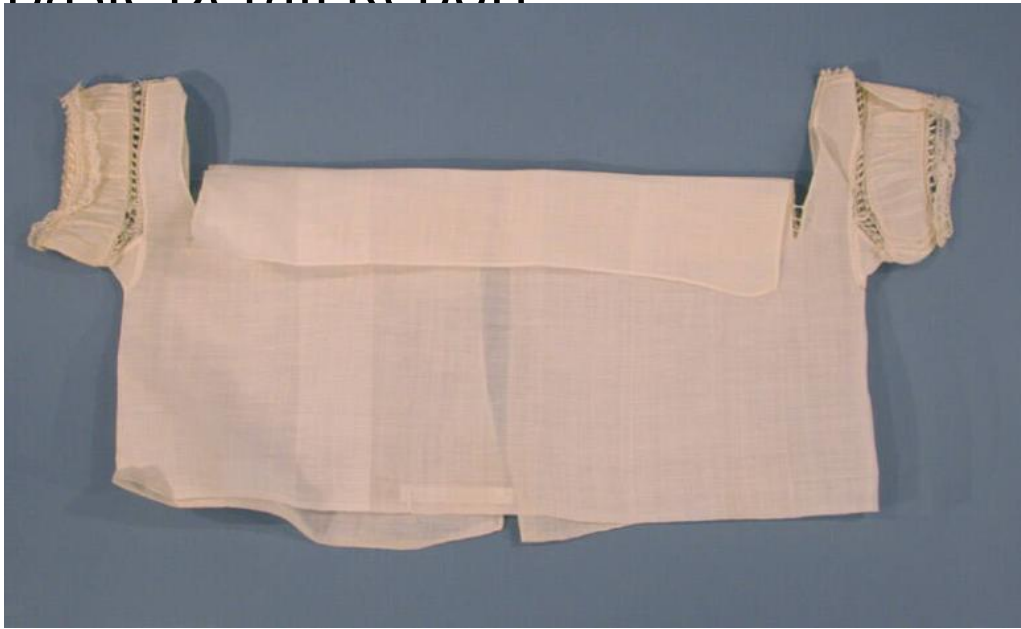


Basic Detail Report



Title Infant's Shirt

Date about 1900

Primary Maker Fanny Clark

Medium Hand-stitched linen with machine-made lace

Description Infant's shirt of fine, white linen, made from a long rectangle of fabric, folded with the narrow ends to the center back to create the opening. The side folds are slit to create the armholes. The sleeves are about 1 1/2 inch long and consist of an insertion of machine-made lace, a whipped-gathered strip of self-fabric, and an edging of lace. The top edges of the shirt are slit about one inch in from the armhole, creating square flaps that fold down over the baby band. The inside corners of these flaps are reinforced with three rows of buttonhole-stitched tacks. This is an old-fashioned style shirt for the period during which it was said to have been made.

Dimensions Primary Dimensions (length x width): 7 1/2 x 15 1/2in. (19.1 x 39.4cm)