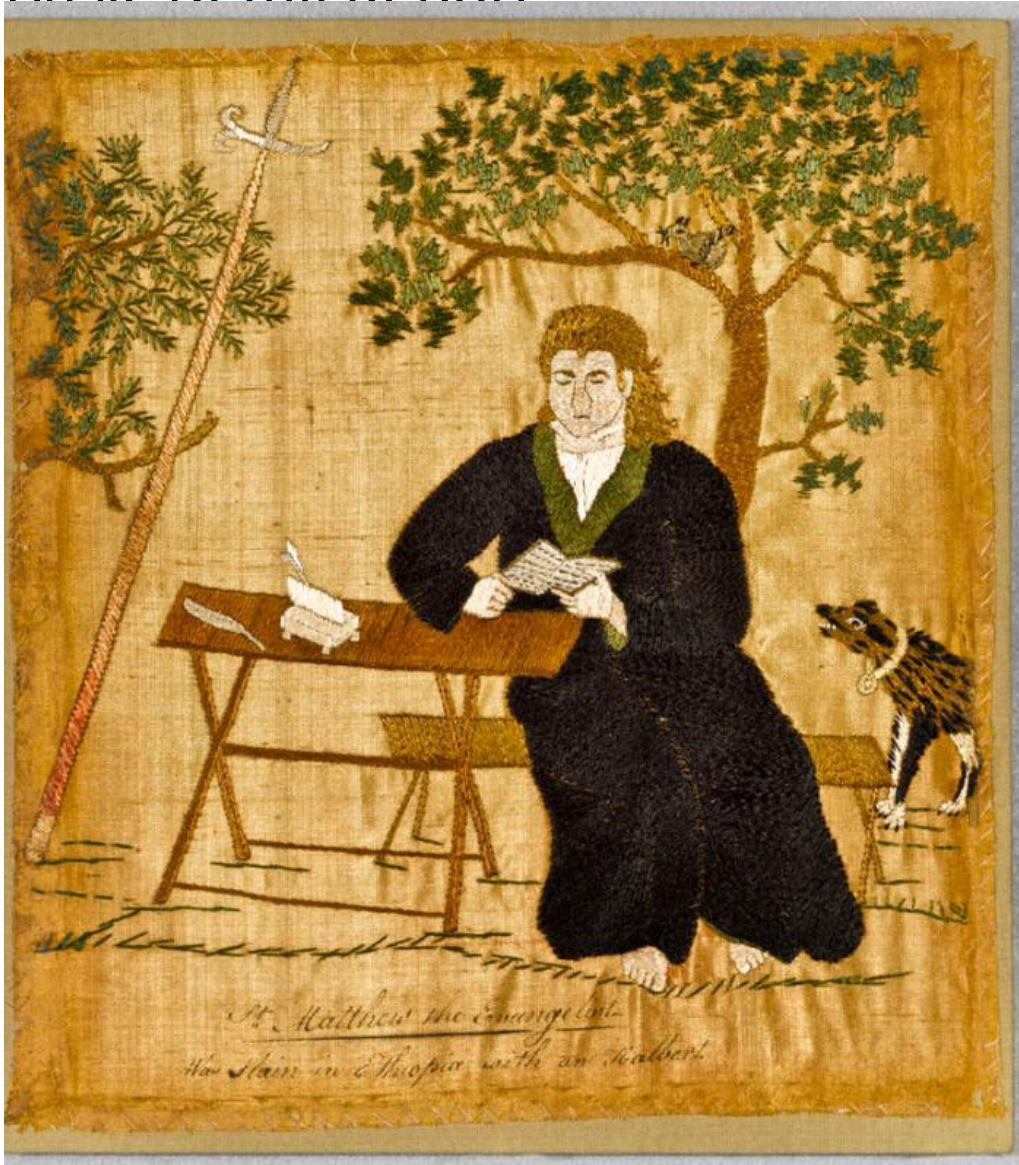


Basic Detail Report



Title St. Matthew the Evangelist

Date 1776-1780

Primary Maker Prudence Punderson

Medium Embroidery; silk thread, floss and ink on a plain-woven silk ground

Description Needlework picture worked in black, light and dark brown, green, grey, yellow, cream and red silk threads on a plain-woven gold silk ground, using a surface satin stitch and other stitches. At the bottom is a hand-written inscription in black ink: "St. Matthew the Evangelist/ Was Slain in Ethiopia with

Basic Detail Report

an Halbert." This is one of a group of twelve silk needlework pictures; each

depicts an apostle and has an ink inscription at the bottom with the name of the

apostle and a description of their death. The needlework picture is rectangular,

oriented vertically. It shows a man seated on a bench and leaning upon a trestle

table carrying an inkstand with two feather quills. The man wears a long black

robe, or banyan, and carries a folded sheet of paper, or book, with writing. The

man is seated between two trees. A halberd, or long spear with an axe blade at

the end, is propped up against the left tree. A small grey squirrel sits in the right

tree. A dog with a collar stands at the right edge of the picture. All four edges of

the needlework are whip-stitched. The picture is hand-drawn on the ground

with black and red ink then embroidered in untwisted silk and floss. The ground

has 112 yarns per inch in the warp and 80 yarns per inch in the weft. Stitches:

The principal stitch is the surface satin stitch; it also includes satin, stem and

some free-form stitches. Condition: There are three holes in the right edge of the

ground. The left tree is matted and lightly stained along the left edge. The lower

left corner has split and been repaired. A small area of the top right corner of the

ground is missing. There is some fading to the ground and embroidery. The

needlework picture has been cleaned gently then stitched to a plain-woven

cotton support fabric applied to a rigid mount. The picture is not framed.

Dimensions Primary Dimensions (height x width of ground): 9 1/4 x 8 1/4in. (23.5

x 21cm) Mount (height x width): 9 1/2 x 8 1/2in. (24.1 x 21.6cm)