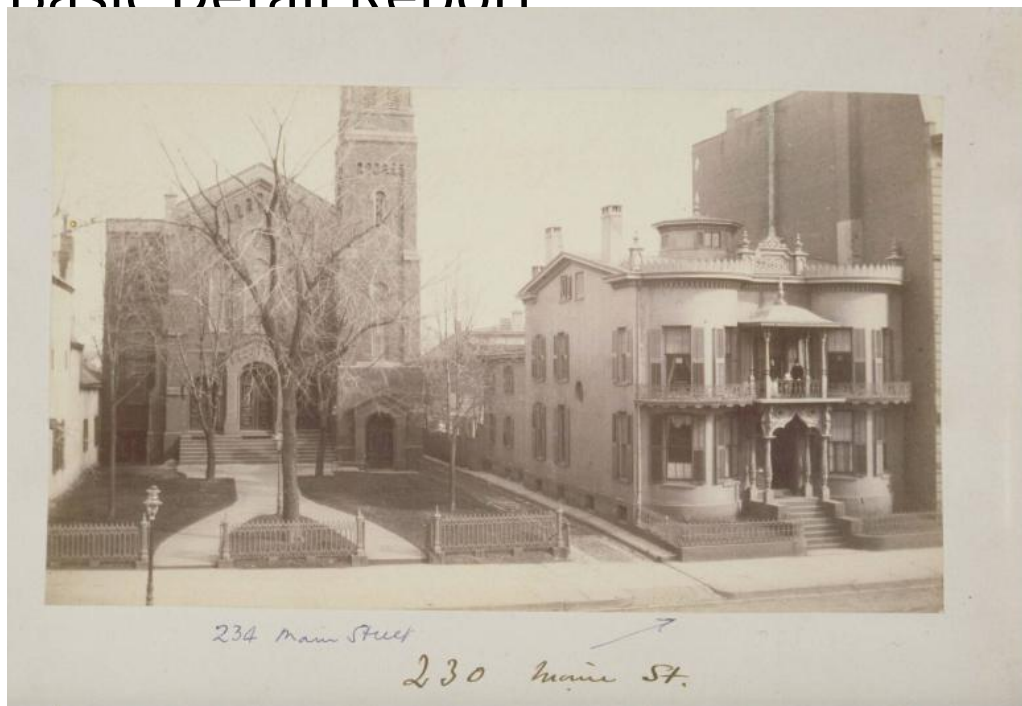


Basic Detail Report



**Title The First Independent Universalist Church, 234 Main Street,
Hartford.**

Date 1882

Primary Maker Unknown

Medium Photography; albumen print on paper

Description A brick Romanesque revival church with arched windows, a steeple, and corbel tables is at the left. Leafless trees, a grassy lawn, paved walks, and an iron fence are in front of the church building. An alley separates the church from a house with a two-story porch between convex bays. Two men are standing on the second-story porch, which has iron railings and a pagoda roof with a finial. A round or octagonal cupola is on the flat roof. Windows have louvered shutters. The double ogee arch over the door appears to have been inspired by Islamic architecture. The decoration along the roofline appears to be derived from classical Greek acroteria.

Basic Detail Report

Dimensions Primary Dimensions (image height x width): 4 9/16 x 7 13/16in. (11.6

x 19.8cm) Sheet (height x width): 4 9/16 x 7 13/16in. (11.6 x 19.8cm) Mount

(height x width): 6 3/4 x 9 3/4in. (17.1 x 24.8cm)