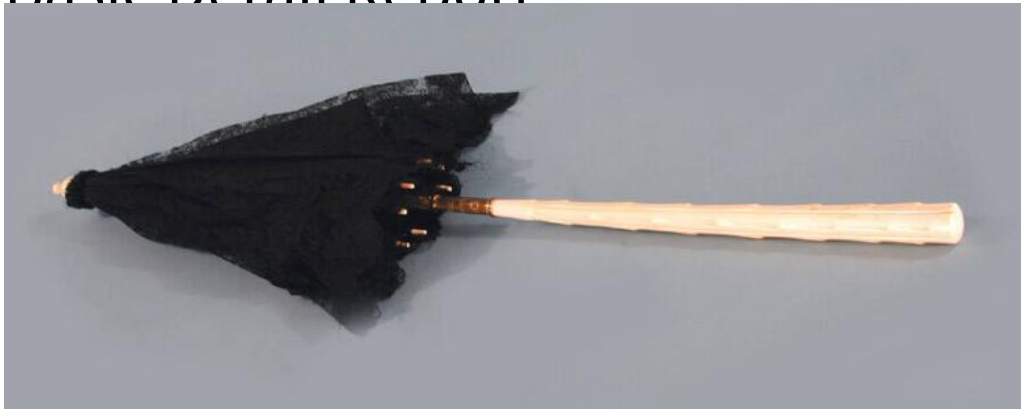


Basic Detail Report



Title Parasol

Date about 1870-1885

Primary Maker Dupuy

Medium Ivory handle, handmade linen bobbin lace, hand-stitched silk cover, brass ferule, ribs are not visible, but are probably baleen and steel

Description Woman's parasol with an ivory handle, hinged in the middle for easier storage. When the hinge is open, a brass ferule slides down to cover the hinge and keep the handle rigid. The handle is carved with grooves extending for its length. Between the grooves are bumps with long gouge marks, like a stylized stick of wood with the twigs pulled off. The cover is black bobbin lace (Chantilly), lined with black silk. The tips of the ribs are ivory and the finial is ivory turned in a double ball design. The outer ribs are probably baleen, and the inner ribs are probably steel; they are covered with the silk and are not visible.

Dimensions Primary Dimensions (length x cover length diameter): 25 1/2 x 24in. (64.8 x 61cm)