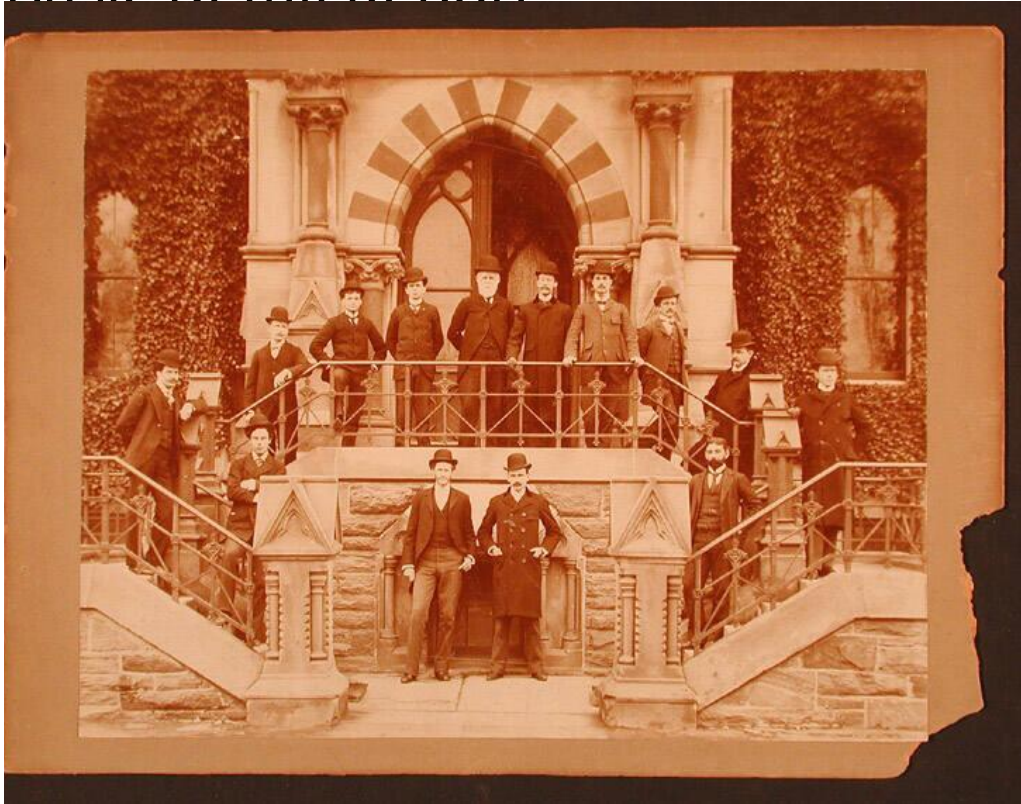


Basic Detail Report



Title Men at an Entrance to a Ivy-covered Stone Building

Date 1880-1889

Primary Maker Unknown

Medium Photography; albumen print on paper on board

Description A group of fourteen men, most wearing hats and some with mustaches or beards, stand on and near a stairway entrance to a stone building.

The double doorway is a pointed gothic arch, with polychrome stonework in alternating dark and light stone. There are short columns on either side of the top of the doorway. The walls visible on either side of the doorway are covered in ivy. Two windows are also visible.

Dimensions Primary Dimensions (image height x width): 7 3/8 x 9 3/8in. (18.7 x

23.8cm) Mount (height x width): 8 1/4 x 11in. (21 x 27.9cm)